

About Town

The Manchester Junior Women's Club Executive Board will meet tonight at 8 at the home of Mrs. Donald Simmons, 30 Oak Dr., Hebron, Co-houses will be Mrs. John Hubble and Mrs. Alexander Egan.

The Sunset Club will meet tomorrow at 1:30 p.m. at the Senior Citizens Center. Members are reminded to bring valentines and canned goods for a kitchen social.

The Manchester Chess Club will meet tonight at 6:30 p.m. in Iona Hall.

The French Club of Manchester will meet Monday at 8 p.m. at Orange Hall. Refreshments will be served. Tickets are available at the door.

The Pathfinders of Trinity Covenant Church will have a Valentine party tomorrow from 8 to 9:30 p.m. at the home of Mrs. George Irwin, 50 Walnut St.

Members of the Chambridge Ladies Club will meet Wednesday at 7:30 p.m. at the Holmes Funeral Home, 400 Main St., to announce candidates for the pay respects to the late George W. Hunt, whose mother, Mrs. George W. Hunt, is a member of the club.

The executive committee of the Women's Society of Christian Service of South United Methodist Church will meet tonight at 8 at the home of Mrs. Richard Sperry, 5 Penn Rd.

Heralding Politics

By Sol R. Cohen

A large contingent of Manchester Democrats has been invited to a reception for Congressmen Joseph Daddario and Benigno Q. Daddario, Sunday at 1:30 p.m. in the Grand Ballroom of the Hartford Hilton.

Daddario is expected to announce his candidacy for the Democratic nomination for governor.

In invitations sent out over his signature, Daddario states, "I will make a major statement to the news media of Connecticut."

About 1,200 persons are expected to attend the reception. Daddario has the backing of all 13 towns in the First Congressional District, to which he represents the First Congressional District, to which he represents the First Congressional District.

Manchester State Sen. David Barry is one of those already working for the Congressional seat nomination, and is seeking support in the 13 towns of the District, including West Hartford.

Democratic Town Chairman Fred Wednesday, at 8 p.m. in the Municipal Building Hearing Room, Joseph Duffey of Hartford will speak. Duffey is an announced candidate for the Democratic nomination for U.S. senator.

On March 10, at 4 p.m. and places to be announced, it will be the turn of State Senator Majority Leader Edward Marcus of New Haven to speak here. Marcus, too, is an announced candidate for the Democratic nomination for U.S. senator.

Machine Topples Over Low Bank

A bucket loader operator was only slightly injured yesterday when his machine overturned about 1 p.m. at Allied Systems concrete coating plant off Toland Tpk.

The operator, identified as Steve Cranfield of Marlborough, was taken to the Manchester Memorial Hospital emergency room by ambulance and was discharged after treatment for a hurt knee. X rays of the injury proved negative.

Police, who were called to the accident scene, said the bucket loader overturned near the west side of the building. Tracks in the mud revealed the machine toppled when it went over a low bank.

State Sen. John Lupton of Weston, who is seeking the GOP nomination of U.S. senator, has come out in opposition to a request by Connecticut Blue Cross for a 20.5 per cent rate hike.

His opposition, he says, "is because it appears to be exhorbitant, discriminatory, and part of a national rising tide of medical costs which amounts to exploitation of the sick."

The request is scheduled for a hearing tomorrow morning by the State Insurance Commission. Lupton says he will appear to voice his opposition.

A public hearing on regulations concerning racial imbalance in the public schools has been scheduled for March 9 at 2 p.m. in the Hall of the House, State Capitol.

DAR Will Visit Museum Tonight

Members of Orford Parish Chapter, Daughters of the American Revolution, will meet tonight at 7:30 at the Latz Junior Museum, 125 Cedar St. Mrs. Madeline McVay, director of the museum, will conduct the members on a tour.

Hostesses for the evening will be Mrs. James W. McKay, Mrs. John E. White, Mrs. Frederick Baker and Mrs. Howard Lockwood.

Members are reminded to bring their items for donation to the Rocky Hill Veterans Hospital.

Members of Orford Parish Chapter, Daughters of the American Revolution, will meet tonight at 7:30 at the Latz Junior Museum, 125 Cedar St. Mrs. Madeline McVay, director of the museum, will conduct the members on a tour.

Hostesses for the evening will be Mrs. James W. McKay, Mrs. John E. White, Mrs. Frederick Baker and Mrs. Howard Lockwood.

Members are reminded to bring their items for donation to the Rocky Hill Veterans Hospital.

GLENNEY LUMBER CO. advertisement featuring a large illustration of a lumberjack and text: "Strikes up the band... with a spectacular selection of sensational savings!"

WORETAIN PANELS advertisement: "All Full Thickness - Full 4' x 8' Size. All First Grade - No Seconds or Rejects. 10 DAYS ONLY. YOUR CHOICE... INCLUDING ELMCO GOLDFEAF 'PLUS FEATURE' PANELS."

Weldwood Wood Glenn advertisement listing various wood products and prices: Saddle Birch \$5.55, Candle Birch \$5.55, Smoky Mount Birch \$5.55, Saddle Oak \$9.55, Verona Oak \$9.55, Elmcro Gold Leaf \$6.00, Chalet Birch \$7.20, Chalet Oak \$7.20, Antique Birch \$9.44, Antique Maple \$10.24, Chestnut Oak \$11.20, Tawny Elm \$12.40, Antique Pecan \$12.40, Barnstable Pecan \$13.12, Vintage Cherry \$13.12, Black Walnut \$16.96.

PANELING RIOT advertisement: "Anti-Inflation Special For Do-it-Yourselfers. 3 DAYS ONLY. 4 x 8 Imported Luan Mahogany Panels \$2.99. MORE BIG SAVINGS ON PANELING ACCESSORIES. Prefinished Wood Moldings Tremendous Selection to accent all paneling... from 13c ft. WELWOOD BIG STICK PANEL ADHESIVE 79c. Color-Matched Nails 55c 1lb. box. Panel Touch-up 49c stick."

SHOP FRIDAYS TO 8:30 P.M. THE W.G. GLENNEY CO. MANCHESTER 649-5253. 336 NORTH MAIN STREET. CARPET and FLOOR COVERING. 308 MAIN STREET TEL. 643-6662. OPEN DAILY TO 6 — THURS., FRI. TO 9 P.M.

SPECIALLY PRICED advertisement with a large graphic of a carpet roll.

WALL-TO-WALL CARPET advertisement: "100% Nylon Dupont 501 Installed Over 32 oz. Waffle Pad \$6.85 Reg. \$9.95. STAIR CARPET AND HALL RUNNERS \$1.99. FANTASTIC BUY INDOOR-OUTDOOR CARPET ALL ENDS FINISHED 8 1/2 x 11 1/2 \$39.95. FAMOUS ARMSTRONG VINYL CORLON \$68.00. CERAMIC BATHROOM \$119.95 INSTALLED. KITCHEN CARPET! 100% NYLON • HIGH DENSITY RUBBER BACK • LARGE ASST. O' COLORS \$9.95 SQ. YD. INSTALLED!!!"

Carswell Faces Third Bias Court advertisement: "PALM BEACH, Fla. (AP) — The deed to a piece of property sold by Supreme Court nominee G. Harold Carswell and his wife in 1966 contained a white-only clause, the Palm Beach Post reported today. The anti-Negro restriction was apparently first established by Carswell's brother-in-law, Jack Simmons Jr., the Post said, when he obtained 33 acres fronting on Ochlocknee Bay in 1965. It said Carswell's wife Virginia acquired part of the land from her brother the same year. 'Ownership, occupancy and use shall be restricted to members of the Caucasian race,' said a covenant written into the deed recorded at the Wakulla County courthouse in Crawfordville. When the Carswells sold their lot for about \$4,800 July 12, 1969, the deed specifically made the sale subject to the restrictive covenants in force three years earlier when Mrs. Carswell got the property, the Post said in a copyright story. Domestic workers employed by and residing with Caucasian families were exempted from the restrictions, the Post said. The tract includes 80 lots, providing exclusive summer home sites for members of the wealthy Simmons family and other socialites of nearby Tallahassee, the newspaper said. The Carswells no longer own any property in the backyard complex, according to the current Wakulla County tax roll. The Post story said purchasers of the Carswell lot were Mrs. Harriet N. Yon, wife of Tallahassee Postmaster Peyton Yon, and Mrs. Maie Middleton, a Tallahassee widow. The Carswells and others reported involved in the deal were not immediately available for comment. Carswell, a judge of the 5th Circuit Court of Appeal, has been in seclusion since the Senate Judiciary Committee last week recessed its hearings on his Supreme Court nomination. Many of Carswell's Senate critics have attacked his civil rights rulings during the 12 years he has served on the federal bench, his brief membership in an all-white Tallahassee country club in 1955 and a white supremacy speech he made as a 26-year-old candidate for the Georgia Legislature in 1948.

Chicago Trial Goes to Jury advertisement: "CHICAGO (AP) — Sometime this weekend the jury will be locked up to reflect on five months of testimony, legal riffs and bitter conflict and decide whether seven men plotted violence at the time of the 1968 Democratic National Convention. 'It's an awesome task,' defense lawyer William M. Kunstler told the U.S. District Court jury of 10 women and two men Thursday in his closing argument. 'It's hard to divorce five months of experience from your mind and decide this case, on the facts.' 'You've seen and heard many things here that are galling, disturbing interchanges. Some were humorous, some were boring, I'm sure.' The trial has recorded outbursts, arguments and stunts perhaps unequalled in American court annals. Judge Julius J. Hoffman, 74, a tiny, wiry man, has been subjected to disobedience and, in his judgment, 'vituperation.' The defendants have maintained a constant stream of insults and discourtesies. A confidant of Nasser and editor of the Cairo newspaper Al-Ahram, Hassanin Helal, claimed the United States, in a letter to Hoffman, 'is a disgrace to the Jews,' and swore at him in Yiddish. Bobby G. Seal, a Black Panther leader, was sentenced to four years in prison for contempt and held for a separate trial after gagging and tying himself to a pillar in court. He called Judge Hoffman 'a racist, fascist pig.' David T. Dellinger, 54, the oldest of the defendants, called the judge 'a liar, a hypocrite,' after he used an obscenity and called a witness a liar. Kunstler told the judge he was a disgrace to justice and said, 'You can send me to jail but I'm going to say some things that I've wanted to say for several months.' The Peers group has been assigned to find out whether Army officers tried to hush up atrocities which may have occurred at Son My. Willingham was promoted to sergeant one year ago, he holds several decorations for Vietnam duty, among them the Bronze Star, the Air Medal, and the Purple Heart. Willingham could draw a penalty as

On Nation's Docks 'Pilferage a Fringe Benefit' Costing Millions Annually advertisement: "NEW YORK (AP) — The cost of theft and pilferage on the nation's docks is running into the tens of millions of dollars a year, reported by the American Institute of Marine Underwriters. It is this failure to report stolen items that makes it difficult to determine the exact dollar loss annually through pilferage and theft. The American Institute of Marine Underwriters estimated that in 1968 theft and pilferage in international commerce cost U.S. industry \$59 million and has been spiraling each year. Spokesmen for most agencies in the shipping industry, however, er, think that the \$59 million figure represents only the value of goods actually reported stolen — a small part of the actual losses through theft and pilferage. To cut the losses he incurs, an importer may add to the price of an item, thus making the ultimate consumer help pay for the pilferage. Using large containers to ship goods is one way to reduce pilferage, but as one waterfront investigator here said, 'Instead of taking a couple of bottles of wine, they take the whole container, making it theft.' 'They fear retaliation from dockworkers and an increase in their insurance premiums' — and maybe of being dropped as an account by an insurance company if losses are continually reported. It is this failure to report stolen items that makes it difficult to determine the exact dollar loss annually through pilferage and theft. The American Institute of Marine Underwriters estimated that in 1968 theft and pilferage in international commerce cost U.S. industry \$59 million and has been spiraling each year. Spokesmen for most agencies in the shipping industry, however, er, think that the \$59 million figure represents only the value of goods actually reported stolen — a small part of the actual losses through theft and pilferage. To cut the losses he incurs, an importer may add to the price of an item, thus making the ultimate consumer help pay for the pilferage. Using large containers to ship goods is one way to reduce pilferage, but as one waterfront investigator here said, 'Instead of taking a couple of bottles of wine, they take the whole container, making it theft.' 'They fear retaliation from dockworkers and an increase in their insurance premiums' — and maybe of being dropped as an account by an insurance company if losses are continually reported. It is this failure to report stolen items that makes it difficult to determine the exact dollar loss annually through pilferage and theft. The American Institute of Marine Underwriters estimated that in 1968 theft and pilferage in international commerce cost U.S. industry \$59 million and has been spiraling each year. Spokesmen for most agencies in the shipping industry, however, er, think that the \$59 million figure represents only the value of goods actually reported stolen — a small part of the actual losses through theft and pilferage. To cut the losses he incurs, an importer may add to the price of an item, thus making the ultimate consumer help pay for the pilferage. Using large containers to ship goods is one way to reduce pilferage, but as one waterfront investigator here said, 'Instead of taking a couple of bottles of wine, they take the whole container, making it theft.' 'They fear retaliation from dockworkers and an increase in their insurance premiums' — and maybe of being dropped as an account by an insurance company if losses are continually reported. It is this failure to report stolen items that makes it difficult to determine the exact dollar loss annually through pilferage and theft. The American Institute of Marine Underwriters estimated that in 1968 theft and pilferage in international commerce cost U.S. industry \$59 million and has been spiraling each year. Spokesmen for most agencies in the shipping industry, however, er, think that the \$59 million figure represents only the value of goods actually reported stolen — a small part of the actual losses through theft and pilferage. To cut the losses he incurs, an importer may add to the price of an item, thus making the ultimate consumer help pay for the pilferage. Using large containers to ship goods is one way to reduce pilferage, but as one waterfront investigator here said, 'Instead of taking a couple of bottles of wine, they take the whole container, making it theft.' 'They fear retaliation from dockworkers and an increase in their insurance premiums' — and maybe of being dropped as an account by an insurance company if losses are continually reported. It is this failure to report stolen items that makes it difficult to determine the exact dollar loss annually through pilferage and theft. The American Institute of Marine Underwriters estimated that in 1968 theft and pilferage in international commerce cost U.S. industry \$59 million and has been spiraling each year. Spokesmen for most agencies in the shipping industry, however, er, think that the \$59 million figure represents only the value of goods actually reported stolen — a small part of the actual losses through theft and pilferage. To cut the losses he incurs, an importer may add to the price of an item, thus making the ultimate consumer help pay for the pilferage. Using large containers to ship goods is one way to reduce pilferage, but as one waterfront investigator here said, 'Instead of taking a couple of bottles of wine, they take the whole container, making it theft.' 'They fear retaliation from dockworkers and an increase in their insurance premiums' — and maybe of being dropped as an account by an insurance company if losses are continually reported. It is this failure to report stolen items that makes it difficult to determine the exact dollar loss annually through pilferage and theft. The American Institute of Marine Underwriters estimated that in 1968 theft and pilferage in international commerce cost U.S. industry \$59 million and has been spiraling each year. Spokesmen for most agencies in the shipping industry, however, er, think that the \$59 million figure represents only the value of goods actually reported stolen — a small part of the actual losses through theft and pilferage. To cut the losses he incurs, an importer may add to the price of an item, thus making the ultimate consumer help pay for the pilferage. Using large containers to ship goods is one way to reduce pilferage, but as one waterfront investigator here said, 'Instead of taking a couple of bottles of wine, they take the whole container, making it theft.' 'They fear retaliation from dockworkers and an increase in their insurance premiums' — and maybe of being dropped as an account by an insurance company if losses are continually reported. It is this failure to report stolen items that makes it difficult to determine the exact dollar loss annually through pilferage and theft. The American Institute of Marine Underwriters estimated that in 1968 theft and pilferage in international commerce cost U.S. industry \$59 million and has been spiraling each year. Spokesmen for most agencies in the shipping industry, however, er, think that the \$59 million figure represents only the value of goods actually reported stolen — a small part of the actual losses through theft and pilferage. To cut the losses he incurs, an importer may add to the price of an item, thus making the ultimate consumer help pay for the pilferage. Using large containers to ship goods is one way to reduce pilferage, but as one waterfront investigator here said, 'Instead of taking a couple of bottles of wine, they take the whole container, making it theft.' 'They fear retaliation from dockworkers and an increase in their insurance premiums' — and maybe of being dropped as an account by an insurance company if losses are continually reported. It is this failure to report stolen items that makes it difficult to determine the exact dollar loss annually through pilferage and theft. The American Institute of Marine Underwriters estimated that in 1968 theft and pilferage in international commerce cost U.S. industry \$59 million and has been spiraling each year. Spokesmen for most agencies in the shipping industry, however, er, think that the \$59 million figure represents only the value of goods actually reported stolen — a small part of the actual losses through theft and pilferage. To cut the losses he incurs, an importer may add to the price of an item, thus making the ultimate consumer help pay for the pilferage. Using large containers to ship goods is one way to reduce pilferage, but as one waterfront investigator here said, 'Instead of taking a couple of bottles of wine, they take the whole container, making it theft.' 'They fear retaliation from dockworkers and an increase in their insurance premiums' — and maybe of being dropped as an account by an insurance company if losses are continually reported. It is this failure to report stolen items that makes it difficult to determine the exact dollar loss annually through pilferage and theft. The American Institute of Marine Underwriters estimated that in 1968 theft and pilferage in international commerce cost U.S. industry \$59 million and has been spiraling each year. Spokesmen for most agencies in the shipping industry, however, er, think that the \$59 million figure represents only the value of goods actually reported stolen — a small part of the actual losses through theft and pilferage. To cut the losses he incurs, an importer may add to the price of an item, thus making the ultimate consumer help pay for the pilferage. Using large containers to ship goods is one way to reduce pilferage, but as one waterfront investigator here said, 'Instead of taking a couple of bottles of wine, they take the whole container, making it theft.' 'They fear retaliation from dockworkers and an increase in their insurance premiums' — and maybe of being dropped as an account by an insurance company if losses are continually reported. It is this failure to report stolen items that makes it difficult to determine the exact dollar loss annually through pilferage and theft. The American Institute of Marine Underwriters estimated that in 1968 theft and pilferage in international commerce cost U.S. industry \$59 million and has been spiraling each year. Spokesmen for most agencies in the shipping industry, however, er, think that the \$59 million figure represents only the value of goods actually reported stolen — a small part of the actual losses through theft and pilferage. To cut the losses he incurs, an importer may add to the price of an item, thus making the ultimate consumer help pay for the pilferage. Using large containers to ship goods is one way to reduce pilferage, but as one waterfront investigator here said, 'Instead of taking a couple of bottles of wine, they take the whole container, making it theft.' 'They fear retaliation from dockworkers and an increase in their insurance premiums' — and maybe of being dropped as an account by an insurance company if losses are continually reported. It is this failure to report stolen items that makes it difficult to determine the exact dollar loss annually through pilferage and theft. The American Institute of Marine Underwriters estimated that in 1968 theft and pilferage in international commerce cost U.S. industry \$59 million and has been spiraling each year. Spokesmen for most agencies in the shipping industry, however, er, think that the \$59 million figure represents only the value of goods actually reported stolen — a small part of the actual losses through theft and pilferage. To cut the losses he incurs, an importer may add to the price of an item, thus making the ultimate consumer help pay for the pilferage. Using large containers to ship goods is one way to reduce pilferage, but as one waterfront investigator here said, 'Instead of taking a couple of bottles of wine, they take the whole container, making it theft.' 'They fear retaliation from dockworkers and an increase in their insurance premiums' — and maybe of being dropped as an account by an insurance company if losses are continually reported. It is this failure to report stolen items that makes it difficult to determine the exact dollar loss annually through pilferage and theft. The American Institute of Marine Underwriters estimated that in 1968 theft and pilferage in international commerce cost U.S. industry \$59 million and has been spiraling each year. Spokesmen for most agencies in the shipping industry, however, er, think that the \$59 million figure represents only the value of goods actually reported stolen — a small part of the actual losses through theft and pilferage. To cut the losses he incurs, an importer may add to the price of an item, thus making the ultimate consumer help pay for the pilferage. Using large containers to ship goods is one way to reduce pilferage, but as one waterfront investigator here said, 'Instead of taking a couple of bottles of wine, they take the whole container, making it theft.' 'They fear retaliation from dockworkers and an increase in their insurance premiums' — and maybe of being dropped as an account by an insurance company if losses are continually reported. It is this failure to report stolen items that makes it difficult to determine the exact dollar loss annually through pilferage and theft. The American Institute of Marine Underwriters estimated that in 1968 theft and pilferage in international commerce cost U.S. industry \$59 million and has been spiraling each year. Spokesmen for most agencies in the shipping industry, however, er, think that the \$59 million figure represents only the value of goods actually reported stolen — a small part of the actual losses through theft and pilferage. To cut the losses he incurs, an importer may add to the price of an item, thus making the ultimate consumer help pay for the pilferage. Using large containers to ship goods is one way to reduce pilferage, but as one waterfront investigator here said, 'Instead of taking a couple of bottles of wine, they take the whole container, making it theft.' 'They fear retaliation from dockworkers and an increase in their insurance premiums' — and maybe of being dropped as an account by an insurance company if losses are continually reported. It is this failure to report stolen items that makes it difficult to determine the exact dollar loss annually through pilferage and theft. The American Institute of Marine Underwriters estimated that in 1968 theft and pilferage in international commerce cost U.S. industry \$59 million and has been spiraling each year. Spokesmen for most agencies in the shipping industry, however, er, think that the \$59 million figure represents only the value of goods actually reported stolen — a small part of the actual losses through theft and pilferage. To cut the losses he incurs, an importer may add to the price of an item, thus making the ultimate consumer help pay for the pilferage. Using large containers to ship goods is one way to reduce pilferage, but as one waterfront investigator here said, 'Instead of taking a couple of bottles of wine, they take the whole container, making it theft.' 'They fear retaliation from dockworkers and an increase in their insurance premiums' — and maybe of being dropped as an account by an insurance company if losses are continually reported. It is this failure to report stolen items that makes it difficult to determine the exact dollar loss annually through pilferage and theft. The American Institute of Marine Underwriters estimated that in 1968 theft and pilferage in international commerce cost U.S. industry \$59 million and has been spiraling each year. Spokesmen for most agencies in the shipping industry, however, er, think that the \$59 million figure represents only the value of goods actually reported stolen — a small part of the actual losses through theft and pilferage. To cut the losses he incurs, an importer may add to the price of an item, thus making the ultimate consumer help pay for the pilferage. Using large containers to ship goods is one way to reduce pilferage, but as one waterfront investigator here said, 'Instead of taking a couple of bottles of wine, they take the whole container, making it theft.' 'They fear retaliation from dockworkers and an increase in their insurance premiums' — and maybe of being dropped as an account by an insurance company if losses are continually reported. It is this failure to report stolen items that makes it difficult to determine the exact dollar loss annually through pilferage and theft. The American Institute of Marine Underwriters estimated that in 1968 theft and pilferage in international commerce cost U.S. industry \$59 million and has been spiraling each year. Spokesmen for most agencies in the shipping industry, however, er, think that the \$59 million figure represents only the value of goods actually reported stolen — a small part of the actual losses through theft and pilferage. To cut the losses he incurs, an importer may add to the price of an item, thus making the ultimate consumer help pay for the pilferage. Using large containers to ship goods is one way to reduce pilferage, but as one waterfront investigator here said, 'Instead of taking a couple of bottles of wine, they take the whole container, making it theft.' 'They fear retaliation from dockworkers and an increase in their insurance premiums' — and maybe of being dropped as an account by an insurance company if losses are continually reported. It is this failure to report stolen items that makes it difficult to determine the exact dollar loss annually through pilferage and theft. The American Institute of Marine Underwriters estimated that in 1968 theft and pilferage in international commerce cost U.S. industry \$59 million and has been spiraling each year. Spokesmen for most agencies in the shipping industry, however, er, think that the \$59 million figure represents only the value of goods actually reported stolen — a small part of the actual losses through theft and pilferage. To cut the losses he incurs, an importer may add to the price of an item, thus making the ultimate consumer help pay for the pilferage. Using large containers to ship goods is one way to reduce pilferage, but as one waterfront investigator here said, 'Instead of taking a couple of bottles of wine, they take the whole container, making it theft.' 'They fear retaliation from dockworkers and an increase in their insurance premiums' — and maybe of being dropped as an account by an insurance company if losses are continually reported. It is this failure to report stolen items that makes it difficult to determine the exact dollar loss annually through pilferage and theft. The American Institute of Marine Underwriters estimated that in 1968 theft and pilferage in international commerce cost U.S. industry \$59 million and has been spiraling each year. Spokesmen for most agencies in the shipping industry, however, er, think that the \$59 million figure represents only the value of goods actually reported stolen — a small part of the actual losses through theft and pilferage. To cut the losses he incurs, an importer may add to the price of an item, thus making the ultimate consumer help pay for the pilferage. Using large containers to ship goods is one way to reduce pilferage, but as one waterfront investigator here said, 'Instead of taking a couple of bottles of wine, they take the whole container, making it theft.' 'They fear retaliation from dockworkers and an increase in their insurance premiums' — and maybe of being dropped as an account by an insurance company if losses are continually reported. It is this failure to report stolen items that makes it difficult to determine the exact dollar loss annually through pilferage and theft. The American Institute of Marine Underwriters estimated that in 1968 theft and pilferage in international commerce cost U.S. industry \$59 million and has been spiraling each year. Spokesmen for most agencies in the shipping industry, however, er, think that the \$59 million figure represents only the value of goods actually reported stolen — a small part of the actual losses through theft and pilferage. To cut the losses he incurs, an importer may add to the price of an item, thus making the ultimate consumer help pay for the pilferage. Using large containers to ship goods is one way to reduce pilferage, but as one waterfront investigator here said, 'Instead of taking a couple of bottles of wine, they take the whole container, making it theft.' 'They fear retaliation from dockworkers and an increase in their insurance premiums' — and maybe of being dropped as an account by an insurance company if losses are continually reported. It is this failure to report stolen items that makes it difficult to determine the exact dollar loss annually through pilferage and theft. The American Institute of Marine Underwriters estimated that in 1968 theft and pilferage in international commerce cost U.S. industry \$59 million and has been spiraling each year. Spokesmen for most agencies in the shipping industry, however, er, think that the \$59 million figure represents only the value of goods actually reported stolen — a small part of the actual losses through theft and pilferage. To cut the losses he incurs, an importer may add to the price of an item, thus making the ultimate consumer help pay for the pilferage. Using large containers to ship goods is one way to reduce pilferage, but as one waterfront investigator here said, 'Instead of taking a couple of bottles of wine, they take the whole container, making it theft.' 'They fear retaliation from dockworkers and an increase in their insurance premiums' — and maybe of being dropped as an account by an insurance company if losses are continually reported. It is this failure to report stolen items that makes it difficult to determine the exact dollar loss annually through pilferage and theft. The American Institute of Marine Underwriters estimated that in 1968 theft and pilferage in international commerce cost U.S. industry \$59 million and has been spiraling each year. Spokesmen for most agencies in the shipping industry, however, er, think that the \$59 million figure represents only the value of goods actually reported stolen — a small part of the actual losses through theft and pilferage. To cut the losses he incurs, an importer may add to the price of an item, thus making the ultimate consumer help pay for the pilferage. Using large containers to ship goods is one way to reduce pilferage, but as one waterfront investigator here said, 'Instead of taking a couple of bottles of wine, they take the whole container, making it theft.' 'They fear retaliation from dockworkers and an increase in their insurance premiums' — and maybe of being dropped as an account by an insurance company if losses are continually reported. It is this failure to report stolen items that makes it difficult to determine the exact dollar loss annually through pilferage and theft. The American Institute of Marine Underwriters estimated that in 1968 theft and pilferage in international commerce cost U.S. industry \$59 million and has been spiraling each year. Spokesmen for most agencies in the shipping industry, however, er, think that the \$59 million figure represents only the value of goods actually reported stolen — a small part of the actual losses through theft and pilferage. To cut the losses he incurs, an importer may add to the price of an item, thus making the ultimate consumer help pay for the pilferage. Using large containers to ship goods is one way to reduce pilferage, but as one waterfront investigator here said, 'Instead of taking a couple of bottles of wine, they take the whole container, making it theft.' 'They fear retaliation from dockworkers and an increase in their insurance premiums' — and maybe of being dropped as an account by an insurance company if losses are continually reported. It is this failure to report stolen items that makes it difficult to determine the exact dollar loss annually through pilferage and theft. The American Institute of Marine Underwriters estimated that in 1968 theft and pilferage in international commerce cost U.S. industry \$59 million and has been spiraling each year. Spokesmen for most agencies in the shipping industry, however, er, think that the \$59 million figure represents only the value of goods actually reported stolen — a small part of the actual losses through theft and pilferage. To cut the losses he incurs, an importer may add to the price of an item, thus making the ultimate consumer help pay for the pilferage. Using large containers to ship goods is one way to reduce pilferage, but as one waterfront investigator here said, 'Instead of taking a couple of bottles of wine, they take the whole container, making it theft.' 'They fear retaliation from dockworkers and an increase in their insurance premiums' — and maybe of being dropped as an account by an insurance company if losses are continually reported. It is this failure to report stolen items that makes it difficult to determine the exact dollar loss annually through pilferage and theft. The American Institute of Marine Underwriters estimated that in 1968 theft and pilferage in international commerce cost U.S. industry \$59 million and has been spiraling each year. Spokesmen for most agencies in the shipping industry, however, er, think that the \$59 million figure represents only the value of goods actually reported stolen — a small part of the actual losses through theft and pilferage. To cut the losses he incurs, an importer may add to the price of an item, thus making the ultimate consumer help pay for the pilferage. Using large containers to ship goods is one way to reduce pilferage, but as one waterfront investigator here said, 'Instead of taking a couple of bottles of wine, they take the whole container, making it theft.' 'They fear retaliation from dockworkers and an increase in their insurance premiums' — and maybe of being dropped as an account by an insurance company if losses are continually reported. It is this failure to report stolen items that makes it difficult to determine the exact dollar loss annually through pilferage and theft. The American Institute of Marine Underwriters estimated that in 1968 theft and pilferage in international commerce cost U.S. industry \$59 million and has been spiraling each year. Spokesmen for most agencies in the shipping industry, however, er, think that the \$59 million figure represents only the value of goods actually reported stolen — a small part of the actual losses through theft and pilferage. To cut the losses he incurs, an importer may add to the price of an item, thus making the ultimate consumer help pay for the pilferage. Using large containers to ship goods is one way to reduce pilferage, but as one waterfront investigator here said, 'Instead of taking a couple of bottles of wine, they take the whole container, making it theft.' 'They fear retaliation from dockworkers and an increase in their insurance premiums' — and maybe of being dropped as an account by an insurance company if losses are continually reported. It is this failure to report stolen items that makes it difficult to determine the exact dollar loss annually through pilferage and theft. The American Institute of Marine Underwriters estimated that in 1968 theft and pilferage in international commerce cost U.S. industry \$59 million and has been spiraling each year. Spokesmen for most agencies in the shipping industry, however, er, think that the \$59 million figure represents only the value of goods actually reported stolen — a small part of the actual losses through theft and pilferage. To cut the losses he incurs, an importer may add to the price of an item, thus making the ultimate consumer help pay for the pilferage. Using large containers to ship goods is one way to reduce pilferage, but as one waterfront investigator here said, 'Instead of taking a couple of bottles of wine, they take the whole container, making it theft.' 'They fear retaliation from dockworkers and an increase in their insurance premiums' — and maybe of being dropped as an account by an insurance company if losses are continually reported. It is this failure to report stolen items that makes it difficult to determine the exact dollar loss annually through pilferage and theft. The American Institute of Marine Underwriters estimated that in 1968 theft and pilferage in international commerce cost U.S. industry \$59 million and has been spiraling each year. Spokesmen for most agencies in the shipping industry, however, er, think that the \$59 million figure represents only the value of goods actually reported stolen — a small part of the actual losses through theft and pilferage. To cut the losses he incurs, an importer may add to the price of an item, thus making the ultimate consumer help pay for the pilferage. Using large containers to ship goods is one way to reduce pilferage, but as one waterfront investigator here said, 'Instead of taking a couple of bottles of wine, they take the whole container, making it theft.' 'They fear retaliation from dockworkers and an increase in their insurance premiums' — and maybe of being dropped as an account by an insurance company if losses are continually reported. It is this failure to report stolen items that makes it difficult to determine the exact dollar loss annually through pilferage and theft. The American Institute of Marine Underwriters estimated that in 1968 theft and pilferage in international commerce cost U.S. industry \$59 million and has been spiraling each year. Spokesmen for most agencies in the shipping industry, however, er, think that the \$59 million figure represents only the value of goods actually reported stolen — a small part of the actual losses through theft and pilferage. To cut the losses he incurs, an importer may add to the price of an item, thus making the ultimate consumer help pay for the pilferage. Using large containers to ship goods is one way to reduce pilferage, but as one waterfront investigator here said, 'Instead of taking a couple of bottles of wine, they take the whole container, making it theft.' 'They fear retaliation from dockworkers and an increase in their insurance premiums' — and maybe of being dropped as an account by an insurance company if losses are continually reported. It is this failure to report stolen items that makes it difficult to determine the exact dollar loss annually through pilferage and theft. The American Institute of Marine Underwriters estimated that in 1968 theft and pilferage in international commerce cost U.S. industry \$59 million and has been spiraling each year. Spokesmen for most agencies in the shipping industry, however, er, think that the \$59 million figure represents only the value of goods actually reported stolen — a small part of the actual losses through theft and pilferage. To cut the losses he incurs, an importer may add to the price of an item, thus making the ultimate consumer help pay for the pilferage. Using large containers to ship goods is one way to reduce pilferage, but as one waterfront investigator here said, 'Instead of taking a couple of bottles of wine, they take the whole container, making it theft.' 'They fear retaliation from dockworkers and an increase in their insurance premiums' — and maybe of being dropped as an account by an insurance company if losses are continually reported. It is this failure to report stolen items that makes it difficult to determine the exact dollar loss annually through pilferage and theft. The American Institute of Marine Underwriters estimated that in 1968 theft and pilferage in international commerce cost U.S. industry \$59 million and has been spiraling each year. Spokesmen for most agencies in the shipping industry, however, er, think that the \$59 million figure represents only the value of goods actually reported stolen — a small part of the actual losses through theft and pilferage. To cut the losses he incurs, an importer may add to the price of an item, thus making the ultimate consumer help pay for the pilferage. Using large containers to ship goods is one way to reduce pilferage, but as one waterfront investigator here said, 'Instead of taking a couple of bottles of wine, they take the whole container, making it theft.' 'They fear retaliation from dockworkers and an increase in their insurance premiums' — and maybe of being dropped as an account by an insurance company if losses are continually reported. It is this failure to report stolen items that makes it difficult to determine the exact dollar loss annually through pilferage and theft. The American Institute of Marine Underwriters estimated that in 1968 theft and pilferage in international commerce cost U.S. industry \$59 million and has been spiraling each year. Spokesmen for most agencies in the shipping industry, however, er, think that the \$59 million figure represents only the value of goods actually reported stolen — a small part of the actual losses through theft and pilferage. To cut the losses he incurs, an importer may add to the price of an item, thus making the ultimate consumer help pay for the pilferage. Using large containers to ship goods is one way to reduce pilferage, but as one waterfront investigator here said, 'Instead of taking a couple of bottles of wine, they take the whole container, making it theft.' 'They fear retaliation from dockworkers and an increase in their insurance premiums' — and maybe of being dropped as an account by an insurance company if losses are continually reported. It is this failure to report stolen items that makes it difficult to determine the exact dollar loss annually through pilferage and theft. The American Institute of Marine Underwriters estimated that in 1968 theft and pilferage in international commerce cost U.S. industry \$59 million and has been spiraling each year. Spokesmen for most agencies in the shipping industry, however, er, think that the \$59 million figure represents only the value of goods actually reported stolen — a small part of the actual losses through theft and pilferage. To cut the losses he incurs, an importer may add to the price of an item, thus making the ultimate consumer help pay for the pilferage. Using large containers to ship goods is one way to reduce pilferage, but as one waterfront investigator here said, 'Instead of taking a couple of bottles of wine, they take the whole container, making it theft.' 'They fear retaliation from dockworkers and an increase in their insurance premiums' — and maybe of being dropped as an account by an insurance company if losses are continually reported. It is this failure to report stolen items that makes it difficult to determine the exact dollar loss annually through pilferage and theft. The American Institute of Marine Underwriters estimated that in 1968 theft and pilferage in international commerce cost U.S. industry \$59 million and has been spiraling each year. Spokesmen for most agencies in the shipping industry, however, er, think that the \$59 million figure represents only the value of goods actually reported stolen — a small part of the actual losses through theft and pilferage. To cut the losses he incurs, an importer may add to the price of an item, thus making the ultimate consumer help pay for the pilferage. Using large containers to ship goods is one way to reduce pilferage, but as one waterfront investigator here said, 'Instead of taking a couple of bottles of wine, they take the whole container, making it theft.' 'They fear retaliation from dockworkers and an increase in their insurance premiums' — and maybe of being dropped as an account by an insurance company if losses are continually reported. It is this failure to report stolen items that makes it difficult to determine the exact dollar loss annually through pilferage and theft. The American Institute of Marine Underwriters estimated that in 1968 theft and pilferage in international commerce cost U.S. industry \$59 million and has been spiraling each year. Spokesmen for most agencies in the shipping industry, however, er, think that the \$59 million figure represents only the value of goods actually reported stolen — a small part of the actual losses through theft and pilferage. To cut the losses he incurs, an importer may add to the price of an item, thus making the ultimate consumer help pay for the pilferage. Using large containers to ship goods is one way to reduce pilferage, but as one waterfront investigator here said, 'Instead of taking a couple of bottles of wine, they take the whole container, making it theft.' 'They fear retaliation from dockworkers and an increase in their insurance premiums' — and maybe of being dropped as an account by an insurance company if losses are continually reported. It is this failure to report stolen items that makes it difficult to determine the exact dollar loss annually through pilferage and theft. The American Institute of Marine Underwriters estimated that in 1968 theft and pilferage in international commerce cost U.S. industry \$59 million and has been spiraling each year. Spokesmen for most agencies in the shipping industry, however, er, think that the \$59 million figure represents only the value of goods actually reported stolen — a small part of the actual losses through theft and pilferage. To cut the losses he incurs, an importer may add to the price of an item, thus making the ultimate consumer help pay for the pilferage. Using large containers to ship goods is one way to reduce pilferage, but as one waterfront investigator here said, 'Instead of taking a couple of bottles of wine, they take the whole container, making it theft.' 'They fear retaliation from dockworkers and an increase in their insurance premiums' — and maybe of being dropped as an account by an insurance company if losses are continually reported. It is this failure to report stolen items that makes it difficult to determine the exact dollar loss annually through pilferage and theft. The American Institute of Marine Underwriters estimated that in 1968 theft and pilferage in international commerce cost U.S. industry \$59 million and has been spiraling each year. Spokesmen for most agencies in the shipping industry, however, er, think that the \$59 million figure represents only the value of goods actually reported stolen — a small part of the actual losses through theft and pilferage. To cut

Arab Attack on Plane Meant to Be a Hijack

BOON, Germany (AP) — A hijack attempt on a plane from Bonn to Munich yesterday...

The attack took place Tuesday at Munich's Helmh Airport. A group of passengers prepared to board an El Al airplane...

Grenades exploded in a terminal on the bus, and a gun battle between police and terrorists followed...

The Bavarian interior minister said the terrorists apparently planned to seize the shuttle bus first and then the airplane...

Here are the commanders of the Action Group for the Liberation of Palestine in the hijack attempt...

Mancheater Evening Herald Published Daily Except Sundays and Holidays at 13 Bishop Street...

ICE HOCKEY LOTS OF ACTION! Southern New England Hockey League (Semi-Pro) FRIDAY at 7:30...

Steve McQueen "The Reivers" The Reivers' William Faulkner's Pulitzer Prize-Winning Novel...

MOVIE RATINGS FOR PARENTS AND YOUNG PEOPLE. ALL AGES ADMITTED. ALL AGES ADMITTED WITH PARENTS.

THEATER TIME SCHEDULE. Cinema 1 East Hartford - The Reivers 7:00, 9:30.

Abendmusik Set At Concordia. Sunday evening at 7:30, Concordia Lutheran Church...

Liggett, Meyers Declines Merger With Heublein. NEW YORK (AP) — Liggett & Meyers Inc. said it has declined a merger proposal...

"Unspeakable" Queen. LONDON (AP) — Queen Elizabeth II has laid her bodyguard to rest in a mausoleum...

DUSTIN HOFFMAN MIA FARROW JOHN AND MARY. No One Under 18 Admitted.

STARTS FEB. 18 "FUNNY GIRL". LANTERN HOUSE RESTAURANT 10 EAST CENTER ST. MANCHESTER 643-5709.

VALENTINE DAY DANCE. BRING YOUR SWEETHEART. SERVICING LUNCHEONS DINNER. BRING YOUR SWEETHEART.

Forest Service Scored in Use Of Defoliant

GLOBE, Ariz. (AP) — A look at an eastern Arizona area sprayed by a defoliant of a type used in Vietnam...

McCarty, holding unofficial hearings into the use of herbicides was guided through the sprayed area Thursday by the woman who started the whistle-blower when some spray intended for Tonto National Forest drifted onto her property...

Abendmusik Set At Concordia. Sunday evening at 7:30, Concordia Lutheran Church, 40 Pitkin St., will feature another program in its "Abendmusik" (evening music) series...

Liggett, Meyers Declines Merger With Heublein. NEW YORK (AP) — Liggett & Meyers Inc. said it has declined a merger proposal...

"Unspeakable" Queen. LONDON (AP) — Queen Elizabeth II has laid her bodyguard to rest in a mausoleum...

DUSTIN HOFFMAN MIA FARROW JOHN AND MARY. No One Under 18 Admitted.

STARTS FEB. 18 "FUNNY GIRL". LANTERN HOUSE RESTAURANT 10 EAST CENTER ST. MANCHESTER 643-5709.

VALENTINE DAY DANCE. BRING YOUR SWEETHEART. SERVICING LUNCHEONS DINNER. BRING YOUR SWEETHEART.

Sheinwold on Bridge

RELIVING ON MAXIMS MAY COST THE GAME. NORTH A 6 5 2 K 4 7 5 3 2 WEST A Q 10 7 3 EAST A 9 5 2 K Q J 10 9 8 7 6 5 SOUTH A 8 4 K 2 Q J 10 9 8 7 6 5 4 3 2 NT Pass 3 NT All Pass

Sheinwold, a charter member of the Danielson Lodge of Elka, and a member of the local lodge for the last 15 years, was born in Boston, attended St. Anselm's Preparatory School, Villanova University and St. Bonaventure University. He received his Masters degree from Boston University.

Washington Whirl: Would-Be Seller Mum On 'Dear Ros' Letters. NEW YORK — Theodore Donson, 32, of the Washington Post, lawyer who tried to sell Jackie Onassis' "Dear Ros" letters...

CHICKEN FRY \$1.50 MONDAY (ALL YOU CAN EAT) HOWARD OHNISON 649-6220 394 TOLLAND TPKE. MANCHESTER, CONN.

HITCHCOCK EXPOSES THE MOST EXPLOSIVE SPY SCANDAL OF THIS CENTURY! ALFRED HITCHCOCK'S TOPAZ. Shows at 1:30 and 3:30—All Seats 85c

MARK TWAIN'S UNFORGETTABLE CLASSIC COMES ALIVE IN A GREAT SCREEN ADVENTURE! THE PRINCE AND THE PAUPER. All NEW! ALL LIVE! Never before on TV!

Sweetheart Night! SAT., FEBRUARY 14th at David's MANCHESTER PARKADE. Music by the Fabulous "COACHMEN". Kay Paulsen—Bernie Bentley also. The "Heart" iest Steak Dinner for Two, — Ever!!

Theodore Ventura Cited As 'Elk of the Year'

Theodore Ventura of 30 Elk St. was today named "Elk of the Year" by the Rockville Lodge of Elks, Jon-Paul Roden, Lodge of Elks, Jon-Paul Roden, announced.

Ventura, a charter member of the Danielson Lodge of Elka, and a member of the local lodge for the last 15 years, was born in Boston, attended St. Anselm's Preparatory School, Villanova University and St. Bonaventure University. He received his Masters degree from Boston University.

Washington Whirl: Would-Be Seller Mum On 'Dear Ros' Letters. NEW YORK — Theodore Donson, 32, of the Washington Post, lawyer who tried to sell Jackie Onassis' "Dear Ros" letters...

CHICKEN FRY \$1.50 MONDAY (ALL YOU CAN EAT) HOWARD OHNISON 649-6220 394 TOLLAND TPKE. MANCHESTER, CONN.

HITCHCOCK EXPOSES THE MOST EXPLOSIVE SPY SCANDAL OF THIS CENTURY! ALFRED HITCHCOCK'S TOPAZ. Shows at 1:30 and 3:30—All Seats 85c

MARK TWAIN'S UNFORGETTABLE CLASSIC COMES ALIVE IN A GREAT SCREEN ADVENTURE! THE PRINCE AND THE PAUPER. All NEW! ALL LIVE! Never before on TV!

Sweetheart Night! SAT., FEBRUARY 14th at David's MANCHESTER PARKADE. Music by the Fabulous "COACHMEN". Kay Paulsen—Bernie Bentley also. The "Heart" iest Steak Dinner for Two, — Ever!!

About Town Egyptian Jets Attack Over Suez Canal

Members of Hose and Ladder Co. 1 of the Town Fire Department will meet tonight at 7:15 at Holmes Funeral Home, 400 Main St., to pay respect to the late George W. Hunt, whose father, George W. C. Hunt, is a member of the company.

Washington Whirl: Would-Be Seller Mum On 'Dear Ros' Letters. NEW YORK — Theodore Donson, 32, of the Washington Post, lawyer who tried to sell Jackie Onassis' "Dear Ros" letters...

Washington Whirl: Would-Be Seller Mum On 'Dear Ros' Letters. NEW YORK — Theodore Donson, 32, of the Washington Post, lawyer who tried to sell Jackie Onassis' "Dear Ros" letters...

CHICKEN FRY \$1.50 MONDAY (ALL YOU CAN EAT) HOWARD OHNISON 649-6220 394 TOLLAND TPKE. MANCHESTER, CONN.

HITCHCOCK EXPOSES THE MOST EXPLOSIVE SPY SCANDAL OF THIS CENTURY! ALFRED HITCHCOCK'S TOPAZ. Shows at 1:30 and 3:30—All Seats 85c

MARK TWAIN'S UNFORGETTABLE CLASSIC COMES ALIVE IN A GREAT SCREEN ADVENTURE! THE PRINCE AND THE PAUPER. All NEW! ALL LIVE! Never before on TV!

Sweetheart Night! SAT., FEBRUARY 14th at David's MANCHESTER PARKADE. Music by the Fabulous "COACHMEN". Kay Paulsen—Bernie Bentley also. The "Heart" iest Steak Dinner for Two, — Ever!!

TV-Radio Tonight

Television. 6:00 P.M. Perry Mason (CBS) 6:30 P.M. The Dick Van Dyke Show (CBS) 7:00 P.M. The Ed Sullivan Show (CBS)

Radio. 5:00 P.M. Hartford Highlights (WABC) 5:30 P.M. The Ed Sullivan Show (WABC) 6:00 P.M. The Ed Sullivan Show (WABC)

Washington Whirl: Would-Be Seller Mum On 'Dear Ros' Letters. NEW YORK — Theodore Donson, 32, of the Washington Post, lawyer who tried to sell Jackie Onassis' "Dear Ros" letters...

CHICKEN FRY \$1.50 MONDAY (ALL YOU CAN EAT) HOWARD OHNISON 649-6220 394 TOLLAND TPKE. MANCHESTER, CONN.

HITCHCOCK EXPOSES THE MOST EXPLOSIVE SPY SCANDAL OF THIS CENTURY! ALFRED HITCHCOCK'S TOPAZ. Shows at 1:30 and 3:30—All Seats 85c

MARK TWAIN'S UNFORGETTABLE CLASSIC COMES ALIVE IN A GREAT SCREEN ADVENTURE! THE PRINCE AND THE PAUPER. All NEW! ALL LIVE! Never before on TV!

Sweetheart Night! SAT., FEBRUARY 14th at David's MANCHESTER PARKADE. Music by the Fabulous "COACHMEN". Kay Paulsen—Bernie Bentley also. The "Heart" iest Steak Dinner for Two, — Ever!!

FORMICA SINK TOPS NEW COUNTERS INSTALLED, COMPLETE WITH NEW SINKS...

Personalized Floors. 380 MAIN ST., PAUL PHILLIPS, Prop., 643-8888

Put your OIL BURNER in experienced hands. We'll give you the burner the full treatment... to make sure that it is functioning properly...

CANVAS AND ALUMINUM PRODUCTS. Combination Windows and Doors. Fogarty Brothers, Inc. 319 BROAD STREET

iggett's DRUG STORE AT THE PARKADE. FOR PRESCRIPTIONS. CUPID SUGGESTS PERFUMES & COLOGNES

CHANEL COTY. FOR YOUR CONVENIENCE WE GIFT WRAP. FREE

Soviet Aid: Permanent Orbital Lab. SAN ANTONIO, Tex. (AP) — Man's first permanent laboratory in earth orbit probably will be put up by the Russians...

CHANEL COTY. DUSTING POWDER AND COLOGNE. \$7.00

LANVIN. "ARPEGGIO" by LANVIN. Show, Gift Box of 8/4 oz. Dusting Powder, Natural Spray Toilet Water, 1 1/2 oz. 10.00

SPRAY BATH SET. \$6.50. Flambau 4.00. Cologne Duetto 3.00

Hebron Gilead School Plans Approved by Board

The Board of Education last night accepted plans and specifications for the Gilead Hill School addition as submitted by the School Building Committee. The plans call for a 12-room classroom addition with space for superintendent's office and conference room. Also included is the work necessary for grading and seeding a recreation area. Although ball fields will be laid out, the specifications do call for an location of \$2,500 for the purchase of back stops. Included in the specifications is a deadline date of Jan. 1, 1971 for the completion of the addition. There will be a \$50 a day penalty if the completion date is not met.

The plans and specifications are scheduled for advertising bids for Feb. 14, 15 and 16 with the opening of bids on March 1 at 7 p.m. at the Gilead Hill School. The Building Committee was asked about existing leaks in the roof in the present building. The board was informed that this does not come under the new addition. The recommendation was made that the contractor of the original school and have them do the repair work under the new roof.

In the principal's reports to the board, it was recommended that even though a wedding reception held at the Gilead Hill School was most successful, further such use of school facilities was not recommended. Even though it is the school's desire to accommodate local couples, the reports and statistics indicate that this should not always be the sole guiding factor. Attention should be given to the fact that the schools are not equipped with all the facilities. For this one event, additional equipment had to be brought in.

Also, school personnel have to give up their free time, and though it is more advantageous to the school and the community, there are a lot of other obligations. This event necessitated an additional 18-12 hour day for the kitchen and custodial personnel, including a return on Sunday.

Also, the amount of time necessary to prepare and coordinate such an event is considerable. It is impossible to consider all the details at one time. The board felt that school and general maintenance should be all community affairs but not private affairs. At present

Andover Democrats Caucus Tuesday To Pick Committee Slate

Andover Democrats will caucus Tuesday at 8 p.m. in the Old Town Hall to endorse candidates for election at the town meeting. The Democratic Town Committee, April 7 is fixed as the day for the holding of a caucus for the election of members of the committee. If no primary is held, the endorsed candidates are automatically elected. The present members of the Andover Democratic Town Committee include: Andrew Gagnier, Beatrice Kowalski, Jane Cariberg, Patricia Bain, Sarah Palmer, Percy Cook, Leon Palmer, Charles Palmer, Charles Phelps, Gerald Anderson, Pearl Daley, Editha Birmingham, Bette MacDonnell, Dennis Keenan, Nathan Gachell, Valdis Vinkels, William Kravovich, Edward Keeney, and James Uro, Marvin Graboff, and James Egan.

A voter-making session will be held Monday from 6:30 p.m. to 8 p.m. at the Town Office Building. Those qualified to become voters are as follows: Applicant must be 21 years of age, must be a resident of Andover for six months and if foreign born must be a naturalized citizen.

Lutz Volunteers Create New Exhibits

Mrs. Wallace Pettengill of 354 Vernon St. Pomplaters and Mrs. Herman Dvorak, center, of 203 Mountain Rd., and Mrs. Roger J. Brown of 27 Linnwood Dr., repair a clock at the Lutz Junior Museum. Other Volunteer League members created and assembled new exhibits and mounted pictures during yesterday's work-in, attended by 22 members and planned by Mrs. Donald White,

chairman of the school service department volunteers; and Miss Pamela Wurga, museum curator of education. To date this year, school system teachers have borrowed 600 exhibits, and 58 active volunteers have contributed 1,200 hours of service. Persons interested in joining the league may contact Mrs. Charles Swallow, president, 242 Ferguson Rd., or call the museum. (Herald photo by Pinto)

Vernon Townspeople's Views Asked On New School Programs

In an effort to improve and expand the curriculum offered in the Vernon School system, the Board of Education has tentatively approved several new programs and has asked the townspeople to indicate their thoughts on these programs. The programs were approved for consideration by the board's budget committee. Many of the programs will mean very little as far as cost is concerned, but would involve any increase in staff. The estimated cost of a continuing education program is \$11,025. This would expand, coordinate and improve the offering in the summer and evening schools, create an after-school program and explore the possibility of a quality work experience program.

A summer program in the area of student development services is also proposed to coordinate the instruction phase of the program. A pre-school screening program would cost about \$2,800. This would evaluate all incoming kindergarten children. A summer program in the area of student development services is also proposed to coordinate the instruction phase of the program.

Another program, which would cost about \$200, would be the creation of a pilot team teaching unit at the Vernon Center Middle School at the sixth grade level in language arts.

The expansion of the non-graded program now in operation at the Northeast School and the Maple St. school would cost about \$7,000. The curriculum committee recommended that the program be expanded to the Shilmer Road School next year.

Some of the other programs include a pilot project in fifth grade and one class of mental retarded children. Estimated cost is \$225. A cooperative elementary science program with the University of Connecticut, which would involve four Vernon teachers, would cost \$250 per teacher.

Another program, which would cost about \$200, would be the creation of a pilot team teaching unit at the Vernon Center Middle School at the sixth grade level in language arts.

The expansion of the non-graded program now in operation at the Northeast School and the Maple St. school would cost about \$7,000. The curriculum committee recommended that the program be expanded to the Shilmer Road School next year.

Some of the other programs include a pilot project in fifth grade and one class of mental retarded children. Estimated cost is \$225. A cooperative elementary science program with the University of Connecticut, which would involve four Vernon teachers, would cost \$250 per teacher.

Another program, which would cost about \$200, would be the creation of a pilot team teaching unit at the Vernon Center Middle School at the sixth grade level in language arts.

The expansion of the non-graded program now in operation at the Northeast School and the Maple St. school would cost about \$7,000. The curriculum committee recommended that the program be expanded to the Shilmer Road School next year.

Some of the other programs include a pilot project in fifth grade and one class of mental retarded children. Estimated cost is \$225. A cooperative elementary science program with the University of Connecticut, which would involve four Vernon teachers, would cost \$250 per teacher.

Another program, which would cost about \$200, would be the creation of a pilot team teaching unit at the Vernon Center Middle School at the sixth grade level in language arts.

The expansion of the non-graded program now in operation at the Northeast School and the Maple St. school would cost about \$7,000. The curriculum committee recommended that the program be expanded to the Shilmer Road School next year.

Some of the other programs include a pilot project in fifth grade and one class of mental retarded children. Estimated cost is \$225. A cooperative elementary science program with the University of Connecticut, which would involve four Vernon teachers, would cost \$250 per teacher.

Another program, which would cost about \$200, would be the creation of a pilot team teaching unit at the Vernon Center Middle School at the sixth grade level in language arts.

The expansion of the non-graded program now in operation at the Northeast School and the Maple St. school would cost about \$7,000. The curriculum committee recommended that the program be expanded to the Shilmer Road School next year.

Some of the other programs include a pilot project in fifth grade and one class of mental retarded children. Estimated cost is \$225. A cooperative elementary science program with the University of Connecticut, which would involve four Vernon teachers, would cost \$250 per teacher.

Another program, which would cost about \$200, would be the creation of a pilot team teaching unit at the Vernon Center Middle School at the sixth grade level in language arts.

The expansion of the non-graded program now in operation at the Northeast School and the Maple St. school would cost about \$7,000. The curriculum committee recommended that the program be expanded to the Shilmer Road School next year.

Some of the other programs include a pilot project in fifth grade and one class of mental retarded children. Estimated cost is \$225. A cooperative elementary science program with the University of Connecticut, which would involve four Vernon teachers, would cost \$250 per teacher.

Another program, which would cost about \$200, would be the creation of a pilot team teaching unit at the Vernon Center Middle School at the sixth grade level in language arts.

The expansion of the non-graded program now in operation at the Northeast School and the Maple St. school would cost about \$7,000. The curriculum committee recommended that the program be expanded to the Shilmer Road School next year.

Some of the other programs include a pilot project in fifth grade and one class of mental retarded children. Estimated cost is \$225. A cooperative elementary science program with the University of Connecticut, which would involve four Vernon teachers, would cost \$250 per teacher.

Another program, which would cost about \$200, would be the creation of a pilot team teaching unit at the Vernon Center Middle School at the sixth grade level in language arts.

The expansion of the non-graded program now in operation at the Northeast School and the Maple St. school would cost about \$7,000. The curriculum committee recommended that the program be expanded to the Shilmer Road School next year.

Some of the other programs include a pilot project in fifth grade and one class of mental retarded children. Estimated cost is \$225. A cooperative elementary science program with the University of Connecticut, which would involve four Vernon teachers, would cost \$250 per teacher.

Andover Democrats Caucus Tuesday To Pick Committee Slate

Andover Democrats will caucus Tuesday at 8 p.m. in the Old Town Hall to endorse candidates for election at the town meeting. The Democratic Town Committee, April 7 is fixed as the day for the holding of a caucus for the election of members of the committee. If no primary is held, the endorsed candidates are automatically elected. The present members of the Andover Democratic Town Committee include: Andrew Gagnier, Beatrice Kowalski, Jane Cariberg, Patricia Bain, Sarah Palmer, Percy Cook, Leon Palmer, Charles Palmer, Charles Phelps, Gerald Anderson, Pearl Daley, Editha Birmingham, Bette MacDonnell, Dennis Keenan, Nathan Gachell, Valdis Vinkels, William Kravovich, Edward Keeney, and James Uro, Marvin Graboff, and James Egan.

A voter-making session will be held Monday from 6:30 p.m. to 8 p.m. at the Town Office Building. Those qualified to become voters are as follows: Applicant must be 21 years of age, must be a resident of Andover for six months and if foreign born must be a naturalized citizen.

Lutz Volunteers Create New Exhibits

Mrs. Wallace Pettengill of 354 Vernon St. Pomplaters and Mrs. Herman Dvorak, center, of 203 Mountain Rd., and Mrs. Roger J. Brown of 27 Linnwood Dr., repair a clock at the Lutz Junior Museum. Other Volunteer League members created and assembled new exhibits and mounted pictures during yesterday's work-in, attended by 22 members and planned by Mrs. Donald White,

chairman of the school service department volunteers; and Miss Pamela Wurga, museum curator of education. To date this year, school system teachers have borrowed 600 exhibits, and 58 active volunteers have contributed 1,200 hours of service. Persons interested in joining the league may contact Mrs. Charles Swallow, president, 242 Ferguson Rd., or call the museum. (Herald photo by Pinto)

Vernon Townspeople's Views Asked On New School Programs

In an effort to improve and expand the curriculum offered in the Vernon School system, the Board of Education has tentatively approved several new programs and has asked the townspeople to indicate their thoughts on these programs. The programs were approved for consideration by the board's budget committee. Many of the programs will mean very little as far as cost is concerned, but would involve any increase in staff. The estimated cost of a continuing education program is \$11,025. This would expand, coordinate and improve the offering in the summer and evening schools, create an after-school program and explore the possibility of a quality work experience program.

A summer program in the area of student development services is also proposed to coordinate the instruction phase of the program. A pre-school screening program would cost about \$2,800. This would evaluate all incoming kindergarten children. A summer program in the area of student development services is also proposed to coordinate the instruction phase of the program.

Another program, which would cost about \$200, would be the creation of a pilot team teaching unit at the Vernon Center Middle School at the sixth grade level in language arts.

The expansion of the non-graded program now in operation at the Northeast School and the Maple St. school would cost about \$7,000. The curriculum committee recommended that the program be expanded to the Shilmer Road School next year.

Some of the other programs include a pilot project in fifth grade and one class of mental retarded children. Estimated cost is \$225. A cooperative elementary science program with the University of Connecticut, which would involve four Vernon teachers, would cost \$250 per teacher.

Another program, which would cost about \$200, would be the creation of a pilot team teaching unit at the Vernon Center Middle School at the sixth grade level in language arts.

The expansion of the non-graded program now in operation at the Northeast School and the Maple St. school would cost about \$7,000. The curriculum committee recommended that the program be expanded to the Shilmer Road School next year.

Some of the other programs include a pilot project in fifth grade and one class of mental retarded children. Estimated cost is \$225. A cooperative elementary science program with the University of Connecticut, which would involve four Vernon teachers, would cost \$250 per teacher.

Another program, which would cost about \$200, would be the creation of a pilot team teaching unit at the Vernon Center Middle School at the sixth grade level in language arts.

The expansion of the non-graded program now in operation at the Northeast School and the Maple St. school would cost about \$7,000. The curriculum committee recommended that the program be expanded to the Shilmer Road School next year.

Some of the other programs include a pilot project in fifth grade and one class of mental retarded children. Estimated cost is \$225. A cooperative elementary science program with the University of Connecticut, which would involve four Vernon teachers, would cost \$250 per teacher.

Another program, which would cost about \$200, would be the creation of a pilot team teaching unit at the Vernon Center Middle School at the sixth grade level in language arts.

The expansion of the non-graded program now in operation at the Northeast School and the Maple St. school would cost about \$7,000. The curriculum committee recommended that the program be expanded to the Shilmer Road School next year.

Some of the other programs include a pilot project in fifth grade and one class of mental retarded children. Estimated cost is \$225. A cooperative elementary science program with the University of Connecticut, which would involve four Vernon teachers, would cost \$250 per teacher.

Another program, which would cost about \$200, would be the creation of a pilot team teaching unit at the Vernon Center Middle School at the sixth grade level in language arts.

The expansion of the non-graded program now in operation at the Northeast School and the Maple St. school would cost about \$7,000. The curriculum committee recommended that the program be expanded to the Shilmer Road School next year.

Some of the other programs include a pilot project in fifth grade and one class of mental retarded children. Estimated cost is \$225. A cooperative elementary science program with the University of Connecticut, which would involve four Vernon teachers, would cost \$250 per teacher.

Another program, which would cost about \$200, would be the creation of a pilot team teaching unit at the Vernon Center Middle School at the sixth grade level in language arts.

The expansion of the non-graded program now in operation at the Northeast School and the Maple St. school would cost about \$7,000. The curriculum committee recommended that the program be expanded to the Shilmer Road School next year.

Some of the other programs include a pilot project in fifth grade and one class of mental retarded children. Estimated cost is \$225. A cooperative elementary science program with the University of Connecticut, which would involve four Vernon teachers, would cost \$250 per teacher.

Another program, which would cost about \$200, would be the creation of a pilot team teaching unit at the Vernon Center Middle School at the sixth grade level in language arts.

The expansion of the non-graded program now in operation at the Northeast School and the Maple St. school would cost about \$7,000. The curriculum committee recommended that the program be expanded to the Shilmer Road School next year.

Some of the other programs include a pilot project in fifth grade and one class of mental retarded children. Estimated cost is \$225. A cooperative elementary science program with the University of Connecticut, which would involve four Vernon teachers, would cost \$250 per teacher.

Another program, which would cost about \$200, would be the creation of a pilot team teaching unit at the Vernon Center Middle School at the sixth grade level in language arts.

The expansion of the non-graded program now in operation at the Northeast School and the Maple St. school would cost about \$7,000. The curriculum committee recommended that the program be expanded to the Shilmer Road School next year.

Some of the other programs include a pilot project in fifth grade and one class of mental retarded children. Estimated cost is \$225. A cooperative elementary science program with the University of Connecticut, which would involve four Vernon teachers, would cost \$250 per teacher.

Tolland Meadowbrook Wing Formally Accepted

The Board of Education Wednesday night formally accepted the Meadowbrook School addition following an inspection of the addition's 10 rooms on Feb. 11. All 10 rooms are now in use by kindergarten and first grade students. The addition consists of two classes moved into the addition earlier this week. A total of 720 students are enrolled in the school. The new wing was completed by the end of the year. The school was opened on Feb. 11, 1970. The school was opened on Feb. 11, 1970. The school was opened on Feb. 11, 1970.

Tolland Town in Suit Over Collision

The Town of Manchester and an employee of the town water department, Adolph Quaye, have been named defendants in a \$12,500 damage suit, brought by Thomas L. and Evelyn S. Borders of 127 Sycamore Lane. The action stems from a collision Feb. 11, 1969 on Hartford Rd., involving the Borders' car, being driven by Mr. Borders, and a water department truck being driven by Quaye. In papers filed Tuesday in the town clerk's office, Mr. and Mrs. Borders charge Quaye with negligence and carelessness. They are seeking damages for alleged injuries sustained by each of them and for repairs to their car. Borders is seeking \$7,500 and his wife is seeking \$5,000.

Junkie Babies On Increase

NEW HAVEN, Conn. (AP)—"It's really heartbreaking to see these babies shaking and quivering," said a nurse at the hospital. Mrs. Kathleen Dunn, a social worker at Yale-New Haven Hospital, was talking about infants who come into the world with an addiction to heroin. The narcotics finds its way into the system of the unborn child and creates drug dependency before the baby even sees the light of day. The addicted babies may be spotted by their withdrawal symptoms, said Campbell, and a peculiar, high-pitched cry. Campbell expects to see more and more such babies because of the growing narcotics problem.

Half of Force Women WASHINGTON—Over 20 million working women account for nearly half the total civilian labor force, the Labor Department reports. Of these women, three out of five are married and more than 10 million have children under 12.

Named to Health Board NEW YORK (AP)—Dr. James A. Shannon and Dr. Walsh McDermott were sworn in Thursday by Mayor John F. Lindsay as members of the city's Board of Health. Shannon was named to succeed Dr. Lewis Thomas, who died last week. Shannon is a member of the board since 1968.

Valentine Flowers Lovely to Give Buy Them FRESH from the Grower! AZALEAS DEEP RED MUMS All Colors YOUR CHOICE \$4.44

SUDS and SCISSORS POODLE SHOPPE HAPPY VALENTINE'S DAY TO ALL YOU DOGGIES

Suitability: Every dog needs a home, but not all homes are suitable for certain canines. A puppy presented to a home where he will be loved is a wonderful gift to both the home and the dog!

Yes, we will be glad to clip your doggie's nails. No appointment needed!

BEAUTIFUL PLATINUM SILVER POODLE PUPPIES READY FOR VALENTINE'S DAY!!

State Licensed
Member of Poodle Dog Growers
Vermont's Only Specialty Shop—875-7694
2000 N. Aurora from Vernon Elementary School

Tolland Teachers, Board Reach Salary Pact

The Board of Education and the Tolland Education Association have reached agreement on a new contract, similar to last year's. Mrs. Kalas explained the negotiations and had stuck pretty close to the schedule. School Lunches Lunched in all local schools next week are: Monday, ravioli with meat sauce, baked potato, butter, fruit crisp. Tuesday, hot dog on roll, mustard and relish, tossed salad, baked beans, pudding with fruit. Wednesday, cheeseburger on roll, ketchup, potato chips, creamy coleslaw, chocolate ice box cake. Thursday, Hicks and High school, oven-baked chicken, buttered rice, sweet potato biscuits, buttered beans, pudding with topping. Meadowbrook, Variety Day. Friday, fish sticks, mashed potatoes, buttered beans, buttered celery, bread and butter jello with fruit.

Town in Suit Over Collision

The Town of Manchester and an employee of the town water department, Adolph Quaye, have been named defendants in a \$12,500 damage suit, brought by Thomas L. and Evelyn S. Borders of 127 Sycamore Lane. The action stems from a collision Feb. 11, 1969 on Hartford Rd., involving the Borders' car, being driven by Mr. Borders, and a water department truck being driven by Quaye. In papers filed Tuesday in the town clerk's office, Mr. and Mrs. Borders charge Quaye with negligence and carelessness. They are seeking damages for alleged injuries sustained by each of them and for repairs to their car. Borders is seeking \$7,500 and his wife is seeking \$5,000.

FSA Members Receive Pins

At a planning meeting of the Manchester Community College at the Mountain Laurel Chapter of the Future Secretaries Association (FSA) held Wednesday, a representative of the National Retailers Association (NSA) distributed pins and membership cards. The representative discussed making paper flowers for Las Vegas Night, which will be held at the Hartwood Hilton March 28. FSA will have its own booth, and chapter members will start making the flowers Wednesday at 7 p.m. at the college.

Kansas City Third Kansas City, Mo.—Kansas City is the nation's third-largest insurance center. It is served by 12 railroads and 76 truck lines and has 180 garage movements a day. The new Kansas City International Airport soon to open will be the country's third largest.

At The PARKADE BARRICINI OF NEW YORK THE LOOK OF FIT AND FASHION... FOR HER ALONE

The greatest news in panty hose by Verlain... a new miracle fiber that gives you a marvelous new fit. Comfortable, smooth, long stemmed line from toe to waist. 100% nylon in nude, gray, mist, Pacific tan. One size fits all. 1.79

THE BEST BECAUSE...
No Preservatives Added
All Hand Dipped—Not Machine Made
Fresh From Our N. Y. Spotless Kitchen
Shipped In Refrigerated Trucks
Stored In Refrigerated Cases

FROM 79¢ TO \$12.95
WE GIFT WRAP FREE and BEAUTIFULLY
FOR
iggett GIFTS
DRUG STORE

COME TO WOODLAND GARDENS AND GET A BREATH OF SPRING IN OUR FABULOUS GREENHOUSES!
THERE'S NO AIR POLLUTION HERE!
WOODLAND Gardens
168 WOODLAND STREET PHONE 643-8474

BE GOOD TO THE BIRDS!
Wild Bird Seed, Sunflower Seed, Bird Houses, Bird Feeders and Sweet Cakes

State Licensed
Member of Poodle Dog Growers
Vermont's Only Specialty Shop—875-7694
2000 N. Aurora from Vernon Elementary School

State Licensed
Member of Poodle Dog Growers
Vermont's Only Specialty Shop—875-7694
2000 N. Aurora from Vernon Elementary School

MAKE HER VALENTINE A MACHINE WASHABLE CREPE BLOUSE

She'll adore a crepe blouse by Teddi of California with French cuffs and it's machine washable in white, bone, pink, blue, brown, gold, purple, 80-88 9.99



SMILING SERVICE Burton's THE LOVABLE CROCHETED CARDIGAN YOUR VALENTINE WILL LOVE

A machine washable 100% wool cardigan, with tiny crocheted buttons in white. 34-42. 11.94



SMILING SERVICE Burton's

THE LOOK OF FIT AND FASHION...
FOR HER ALONE

The greatest news in panty hose by Verlain... a new miracle fiber that gives you a marvelous new fit. Comfortable, smooth, long stemmed line from toe to waist. 100% nylon in nude, gray, mist, Pacific tan. One size fits all. 1.79

THE BEST BECAUSE...
No Preservatives Added
All Hand Dipped—Not Machine Made
Fresh From Our N. Y. Spotless Kitchen
Shipped In Refrigerated Trucks
Stored In Refrigerated Cases

FROM 79¢ TO \$12.95
WE GIFT WRAP FREE and BEAUTIFULLY
FOR
iggett GIFTS
DRUG STORE

COME TO WOODLAND GARDENS AND GET A BREATH OF SPRING IN OUR FABULOUS GREENHOUSES!
THERE'S NO AIR POLLUTION HERE!
WOODLAND Gardens
168 WOODLAND STREET PHONE 643-8474

BE GOOD TO THE BIRDS!
Wild Bird Seed, Sunflower Seed, Bird Houses, Bird Feeders and Sweet Cakes

State Licensed
Member of Poodle Dog Growers
Vermont's Only Specialty Shop—875-7694
2000 N. Aurora from Vernon Elementary School

Manchester Evening Herald

Published by THE MANCHESTER EVENING HERALD, INC. 100 Main Street, Manchester, Conn. 06102. Telephone 649-4521.

Subscription Rates: Single Copy 10¢, 10 Copies \$1.00, 100 Copies \$10.00.

MEMBER OF THE ASSOCIATION OF AMERICAN PUBLISHERS. This newspaper is published daily except on Sundays and public holidays.

MEMBER OF THE ASSOCIATION OF AMERICAN PUBLISHERS. This newspaper is published daily except on Sundays and public holidays.

MEMBER OF THE ASSOCIATION OF AMERICAN PUBLISHERS. This newspaper is published daily except on Sundays and public holidays.

MEMBER OF THE ASSOCIATION OF AMERICAN PUBLISHERS. This newspaper is published daily except on Sundays and public holidays.

MEMBER OF THE ASSOCIATION OF AMERICAN PUBLISHERS. This newspaper is published daily except on Sundays and public holidays.

MEMBER OF THE ASSOCIATION OF AMERICAN PUBLISHERS. This newspaper is published daily except on Sundays and public holidays.

MEMBER OF THE ASSOCIATION OF AMERICAN PUBLISHERS. This newspaper is published daily except on Sundays and public holidays.

MEMBER OF THE ASSOCIATION OF AMERICAN PUBLISHERS. This newspaper is published daily except on Sundays and public holidays.



PILGRIMAGE TO THE SHRINE OF FATIMA. With Regional Photo in Portugal.

Manchester school pupils purchase War Stamps and Bonds in January totaling \$8,824.41.

Fred E. Werner and Ray Kulpinsky are honored at surprise social for completing 21 and 20 years, respectively, as teachers on the church school staff of Concordia Lutheran Church.

Raymond E. Gardner Jr. of Avon St. wins 1969 Chevrolet Corvair in Cities Service Oil Co. contest.

William W. Vittner of Vittner Garden Center is elected grand president of the New England Nurserymen's Association.

William W. Vittner of Vittner Garden Center is elected grand president of the New England Nurserymen's Association.

William W. Vittner of Vittner Garden Center is elected grand president of the New England Nurserymen's Association.

William W. Vittner of Vittner Garden Center is elected grand president of the New England Nurserymen's Association.

Laird warns Viet Cong on violations. (Continued from Page One) clear American reconnaissance flights over the North would continue to check on possible enemy buildups. Laird denies there was any understanding of a possible truce.

Laird said the policy of protective reaction gives "primary emphasis" to the safety and security of American forces.

Laird said earlier that "aid progress" in Vietnam of the war will permit more American troop withdrawals.

Laird said the policy of protective reaction gives "primary emphasis" to the safety and security of American forces.

Laird said the policy of protective reaction gives "primary emphasis" to the safety and security of American forces.

Laird said the policy of protective reaction gives "primary emphasis" to the safety and security of American forces.

Laird said the policy of protective reaction gives "primary emphasis" to the safety and security of American forces.

Laird said the policy of protective reaction gives "primary emphasis" to the safety and security of American forces.

Laird said the policy of protective reaction gives "primary emphasis" to the safety and security of American forces.

Laird warns Viet Cong on violations. (Continued from Page One) clear American reconnaissance flights over the North would continue to check on possible enemy buildups. Laird denies there was any understanding of a possible truce.

Laird said the policy of protective reaction gives "primary emphasis" to the safety and security of American forces.

Laird said earlier that "aid progress" in Vietnam of the war will permit more American troop withdrawals.

Laird said the policy of protective reaction gives "primary emphasis" to the safety and security of American forces.

Laird said the policy of protective reaction gives "primary emphasis" to the safety and security of American forces.

Laird said the policy of protective reaction gives "primary emphasis" to the safety and security of American forces.

Laird said the policy of protective reaction gives "primary emphasis" to the safety and security of American forces.

Laird said the policy of protective reaction gives "primary emphasis" to the safety and security of American forces.

Laird said the policy of protective reaction gives "primary emphasis" to the safety and security of American forces.

STAR GAZER. Your Daily Activity Guide. According to the Stars. To develop messages for Saturday, read words corresponding to numbers 1 through 20.

STAR GAZER. Your Daily Activity Guide. According to the Stars. To develop messages for Saturday, read words corresponding to numbers 1 through 20.

STAR GAZER. Your Daily Activity Guide. According to the Stars. To develop messages for Saturday, read words corresponding to numbers 1 through 20.

STAR GAZER. Your Daily Activity Guide. According to the Stars. To develop messages for Saturday, read words corresponding to numbers 1 through 20.

STAR GAZER. Your Daily Activity Guide. According to the Stars. To develop messages for Saturday, read words corresponding to numbers 1 through 20.

STAR GAZER. Your Daily Activity Guide. According to the Stars. To develop messages for Saturday, read words corresponding to numbers 1 through 20.

STAR GAZER. Your Daily Activity Guide. According to the Stars. To develop messages for Saturday, read words corresponding to numbers 1 through 20.

STAR GAZER. Your Daily Activity Guide. According to the Stars. To develop messages for Saturday, read words corresponding to numbers 1 through 20.

STAR GAZER. Your Daily Activity Guide. According to the Stars. To develop messages for Saturday, read words corresponding to numbers 1 through 20.

Hilton C. Buley. SCSC President Announces Retirement in February '71. NEW HAVEN, Conn. (AP) — The president of Southern Connecticut State College, Hilton C. Buley, announced Wednesday that he will retire in February of 1971.

Hilton C. Buley. SCSC President Announces Retirement in February '71. NEW HAVEN, Conn. (AP) — The president of Southern Connecticut State College, Hilton C. Buley, announced Wednesday that he will retire in February of 1971.

Hilton C. Buley. SCSC President Announces Retirement in February '71. NEW HAVEN, Conn. (AP) — The president of Southern Connecticut State College, Hilton C. Buley, announced Wednesday that he will retire in February of 1971.

Hilton C. Buley. SCSC President Announces Retirement in February '71. NEW HAVEN, Conn. (AP) — The president of Southern Connecticut State College, Hilton C. Buley, announced Wednesday that he will retire in February of 1971.

Hilton C. Buley. SCSC President Announces Retirement in February '71. NEW HAVEN, Conn. (AP) — The president of Southern Connecticut State College, Hilton C. Buley, announced Wednesday that he will retire in February of 1971.

Hilton C. Buley. SCSC President Announces Retirement in February '71. NEW HAVEN, Conn. (AP) — The president of Southern Connecticut State College, Hilton C. Buley, announced Wednesday that he will retire in February of 1971.

Hilton C. Buley. SCSC President Announces Retirement in February '71. NEW HAVEN, Conn. (AP) — The president of Southern Connecticut State College, Hilton C. Buley, announced Wednesday that he will retire in February of 1971.

Hilton C. Buley. SCSC President Announces Retirement in February '71. NEW HAVEN, Conn. (AP) — The president of Southern Connecticut State College, Hilton C. Buley, announced Wednesday that he will retire in February of 1971.

Hilton C. Buley. SCSC President Announces Retirement in February '71. NEW HAVEN, Conn. (AP) — The president of Southern Connecticut State College, Hilton C. Buley, announced Wednesday that he will retire in February of 1971.

When The Occasion Calls for Flowers, Think of The Parkhill-Joyce Flower Shop. 54 MCKEE STREET. 649-4521.

FLETOHER GLASS CO. OF MANCHESTER. 54 MCKEE STREET. 649-4521. Now is the time to bring in your order to be replaced.

HAPPINESS. 19.7 pc. Popular Daystrom Dinettes... now at Semi-Annual Sale prices!

FOR RENT! That's right, it's not too early to reserve for your family's summer pleasure.

REG TOWN U.S.A. Rte. 6 (West) Williammatic. Open Weekends, Evenings 7 to 10.

Watkins OF MANCHESTER. 19.7 pc. Popular Daystrom Dinettes... now at Semi-Annual Sale prices!

Watkins OF MANCHESTER. 19.7 pc. Popular Daystrom Dinettes... now at Semi-Annual Sale prices!

Watkins OF MANCHESTER. 19.7 pc. Popular Daystrom Dinettes... now at Semi-Annual Sale prices!

Watkins OF MANCHESTER. 19.7 pc. Popular Daystrom Dinettes... now at Semi-Annual Sale prices!

Inside Report

Herald Yesterdays 25 Years Ago. Manchester school pupils purchase War Stamps and Bonds in January totaling \$8,824.41.

Fred E. Werner and Ray Kulpinsky are honored at surprise social for completing 21 and 20 years, respectively, as teachers on the church school staff of Concordia Lutheran Church.

Raymond E. Gardner Jr. of Avon St. wins 1969 Chevrolet Corvair in Cities Service Oil Co. contest.

William W. Vittner of Vittner Garden Center is elected grand president of the New England Nurserymen's Association.

William W. Vittner of Vittner Garden Center is elected grand president of the New England Nurserymen's Association.

William W. Vittner of Vittner Garden Center is elected grand president of the New England Nurserymen's Association.

William W. Vittner of Vittner Garden Center is elected grand president of the New England Nurserymen's Association.

Open Forum

"Lame Excuses" To the Editor, It irritates me as an active voter member of the Health and Social Services Committee of C-DAP to read in The Herald of Monday, Feb. 9, Mr. Eugene Montary's and Mr. John Harkins' lame excuses and denial concerning Mrs. Phyllis Jackson's appointment to the Health and Social Service Task Force.

"Comparison Logical" To the Editor, Your editorial on the middle East in yesterday's (Feb. 10) issue of the Manchester Herald is one of the best I have read in a long time.

"Doing Business With Bill" To the Editor, When Mr. William Hahn closes the doors of "Hahn Furniture" for the final time, Rockville's loss will be much more than a business establishment.

"A Thought for Today" Sponsored by the Manchester Council of Churches. "God is of no importance unless He is of supreme importance." (Abraham Joshua Heschel)

"A Thought for Today" Sponsored by the Manchester Council of Churches. "God is of no importance unless He is of supreme importance." (Abraham Joshua Heschel)

"A Thought for Today" Sponsored by the Manchester Council of Churches. "God is of no importance unless He is of supreme importance." (Abraham Joshua Heschel)

"A Thought for Today" Sponsored by the Manchester Council of Churches. "God is of no importance unless He is of supreme importance." (Abraham Joshua Heschel)

Open Forum

"Comparison Logical" To the Editor, Your editorial on the middle East in yesterday's (Feb. 10) issue of the Manchester Herald is one of the best I have read in a long time.

"Doing Business With Bill" To the Editor, When Mr. William Hahn closes the doors of "Hahn Furniture" for the final time, Rockville's loss will be much more than a business establishment.

"A Thought for Today" Sponsored by the Manchester Council of Churches. "God is of no importance unless He is of supreme importance." (Abraham Joshua Heschel)

"A Thought for Today" Sponsored by the Manchester Council of Churches. "God is of no importance unless He is of supreme importance." (Abraham Joshua Heschel)

"A Thought for Today" Sponsored by the Manchester Council of Churches. "God is of no importance unless He is of supreme importance." (Abraham Joshua Heschel)

"A Thought for Today" Sponsored by the Manchester Council of Churches. "God is of no importance unless He is of supreme importance." (Abraham Joshua Heschel)

"A Thought for Today" Sponsored by the Manchester Council of Churches. "God is of no importance unless He is of supreme importance." (Abraham Joshua Heschel)

Corporation Disposing Of Needless Acquisitions

By JOHN CUNIFF AP Business Analyst. NEW YORK (AP) — Peter Hilton, a New York business consultant, has detected what he feels will become a growing corporate trend during the next two years: spin-offs, or sales of products and product lines.

By JOHN CUNIFF AP Business Analyst. NEW YORK (AP) — Peter Hilton, a New York business consultant, has detected what he feels will become a growing corporate trend during the next two years: spin-offs, or sales of products and product lines.

By JOHN CUNIFF AP Business Analyst. NEW YORK (AP) — Peter Hilton, a New York business consultant, has detected what he feels will become a growing corporate trend during the next two years: spin-offs, or sales of products and product lines.

By JOHN CUNIFF AP Business Analyst. NEW YORK (AP) — Peter Hilton, a New York business consultant, has detected what he feels will become a growing corporate trend during the next two years: spin-offs, or sales of products and product lines.

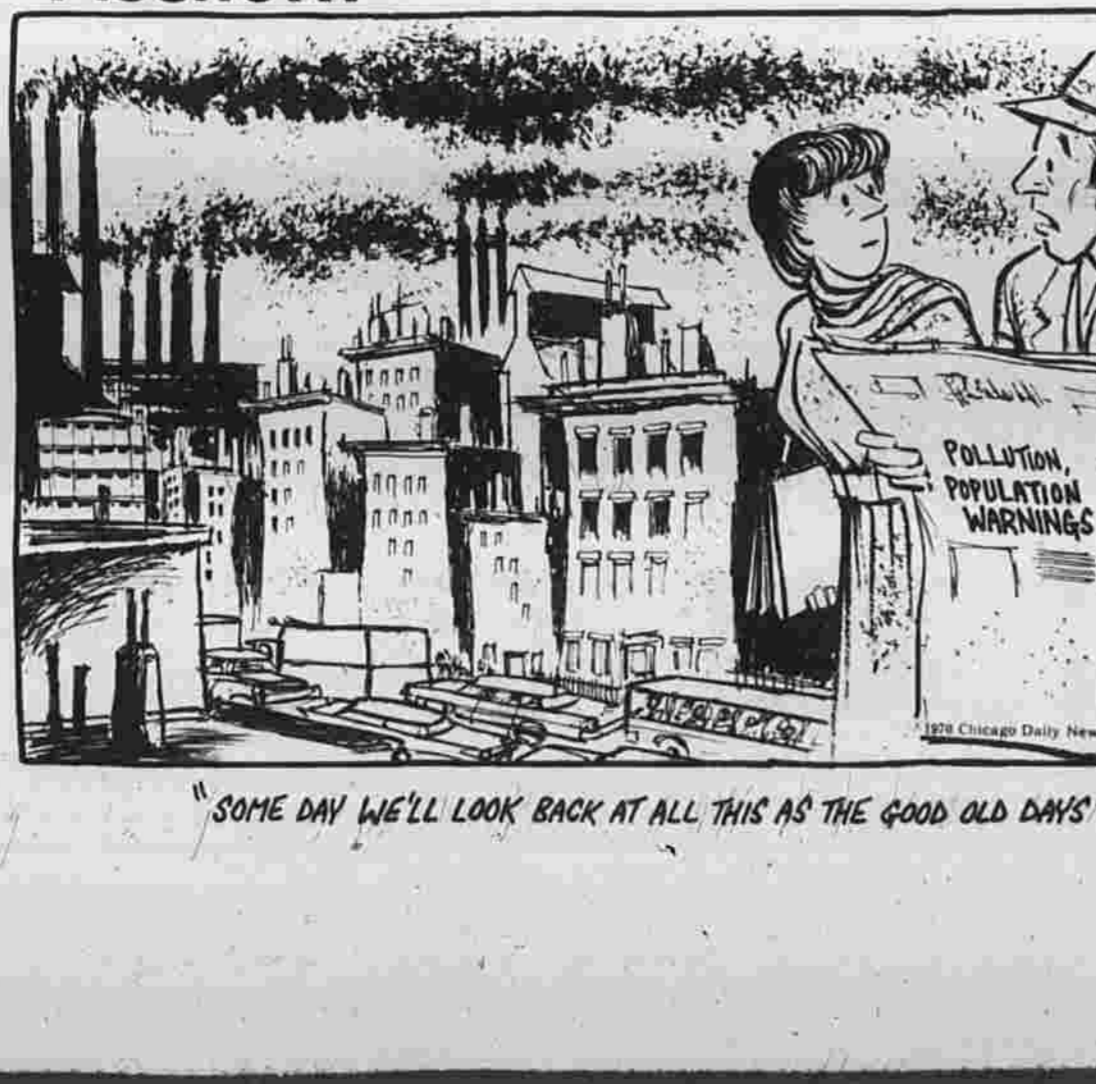
By JOHN CUNIFF AP Business Analyst. NEW YORK (AP) — Peter Hilton, a New York business consultant, has detected what he feels will become a growing corporate trend during the next two years: spin-offs, or sales of products and product lines.

By JOHN CUNIFF AP Business Analyst. NEW YORK (AP) — Peter Hilton, a New York business consultant, has detected what he feels will become a growing corporate trend during the next two years: spin-offs, or sales of products and product lines.

By JOHN CUNIFF AP Business Analyst. NEW YORK (AP) — Peter Hilton, a New York business consultant, has detected what he feels will become a growing corporate trend during the next two years: spin-offs, or sales of products and product lines.

By JOHN CUNIFF AP Business Analyst. NEW YORK (AP) — Peter Hilton, a New York business consultant, has detected what he feels will become a growing corporate trend during the next two years: spin-offs, or sales of products and product lines.

Fischetti



Open Forum

"Comparison Logical" To the Editor, Your editorial on the middle East in yesterday's (Feb. 10) issue of the Manchester Herald is one of the best I have read in a long time.

"Doing Business With Bill" To the Editor, When Mr. William Hahn closes the doors of "Hahn Furniture" for the final time, Rockville's loss will be much more than a business establishment.

"A Thought for Today" Sponsored by the Manchester Council of Churches. "God is of no importance unless He is of supreme importance." (Abraham Joshua Heschel)

Open Forum

"Comparison Logical" To the Editor, Your editorial on the middle East in yesterday's (Feb. 10) issue of the Manchester Herald is one of the best I have read in a long time.

"Doing Business With Bill" To the Editor, When Mr. William Hahn closes the doors of "Hahn Furniture" for the final time, Rockville's loss will be much more than a business establishment.

"A Thought for Today" Sponsored by the Manchester Council of Churches. "God is of no importance unless He is of supreme importance." (Abraham Joshua Heschel)

Open Forum

"Comparison Logical" To the Editor, Your editorial on the middle East in yesterday's (Feb. 10) issue of the Manchester Herald is one of the best I have read in a long time.

"Doing Business With Bill" To the Editor, When Mr. William Hahn closes the doors of "Hahn Furniture" for the final time, Rockville's loss will be much more than a business establishment.

"A Thought for Today" Sponsored by the Manchester Council of Churches. "God is of no importance unless He is of supreme importance." (Abraham Joshua Heschel)

"A Thought for Today" Sponsored by the Manchester Council of Churches. "God is of no importance unless He is of supreme importance." (Abraham Joshua Heschel)

"A Thought for Today" Sponsored by the Manchester Council of Churches. "God is of no importance unless He is of supreme importance." (Abraham Joshua Heschel)

"A Thought for Today" Sponsored by the Manchester Council of Churches. "God is of no importance unless He is of supreme importance." (Abraham Joshua Heschel)

"A Thought for Today" Sponsored by the Manchester Council of Churches. "God is of no importance unless He is of supreme importance." (Abraham Joshua Heschel)

"A Thought for Today" Sponsored by the Manchester Council of Churches. "God is of no importance unless He is of supreme importance." (Abraham Joshua Heschel)

Open Forum

"Comparison Logical" To the Editor, Your editorial on the middle East in yesterday's (Feb. 10) issue of the Manchester Herald is one of the best I have read in a long time.

"Doing Business With Bill" To the Editor, When Mr. William Hahn closes the doors of "Hahn Furniture" for the final time, Rockville's loss will be much more than a business establishment.

"A Thought for Today" Sponsored by the Manchester Council of Churches. "God is of no importance unless He is of supreme importance." (Abraham Joshua Heschel)

"A Thought for Today" Sponsored by the Manchester Council of Churches. "God is of no importance unless He is of supreme importance." (Abraham Joshua Heschel)

"A Thought for Today" Sponsored by the Manchester Council of Churches. "God is of no importance unless He is of supreme importance." (Abraham Joshua Heschel)

"A Thought for Today" Sponsored by the Manchester Council of Churches. "God is of no importance unless He is of supreme importance." (Abraham Joshua Heschel)

"A Thought for Today" Sponsored by the Manchester Council of Churches. "God is of no importance unless He is of supreme importance." (Abraham Joshua Heschel)

"A Thought for Today" Sponsored by the Manchester Council of Churches. "God is of no importance unless He is of supreme importance." (Abraham Joshua Heschel)

Man Stabbed During Fight

A 36-year-old Manfield man is in Manchester Memorial Hospital suffering from a stab wound in the chest and abdomen received yesterday afternoon during a fight at his place of employment in East Hartford.

Second Viet Massacre

(Continued from Page One) Purple Heart. The Washington, D. C., native is the only man to be honored from the ROTC Jan. 28, 1967, after graduating from Murray State, Conn. in 1966.



Chorale Director

Ralph MacCarone has been appointed director of the Civic Chorale for the current season, according to Dr. Pierre Martel, president of the Manchester Civic Orchestra.

More Visiting Jamaica

KINGSTON — Jamaica's tourist industry is expanding rapidly, with the number of tourists more than doubled between 1968 and 1969.

AMC's Gremlin To Lead Invasion Against Beetle

PALM SPRINGS, Calif. (AP) — American Motors Corp. unveiled its military today in the Volkswagen beetle and other small car imports.

Christianity in Decline Amid Religious Boom

By GEORGE W. CORNELL, AP Religion Writer. NEW YORK (AP) — A noted theological defender of traditional Christian doctrine says they're being swamped in a time of pantheism, atheism, spiritism and other "isms."

Religious Business Booms In Anticipation of Eclipse

By ELOY AGUILAR. MEXICO CITY (AP) — More villagers are going to Holy Communion, and sellers of religious candles are doing a big business.

U.S. Docks Hit by Theft

(Continued from Page One) In Seattle, a member of the police burglary and theft division said of pilferage arrests.

Black Newsmen Rebel at Spying For White World

NEW YORK (AP) — Seventy black newsmen say they will resist any attempt by investigators to see their unrecorded or unprinted notes, tapes or films.

Some of our customers are CRACK TROUBLE-SHOOTERS

... but just in case you're not, you are welcome to take the OK used car of your choice to your mechanic for his expert opinion. Before you buy!

Valentine Cards Large Selection Arthur Drug

WANTED Clean, Late Model USED CARS Top Prices Paid For All Makes!

Christianity in Decline Amid Religious Boom

By GEORGE W. CORNELL, AP Religion Writer. NEW YORK (AP) — A noted theological defender of traditional Christian doctrine says they're being swamped in a time of pantheism, atheism, spiritism and other "isms."

Religious Business Booms In Anticipation of Eclipse

By ELOY AGUILAR. MEXICO CITY (AP) — More villagers are going to Holy Communion, and sellers of religious candles are doing a big business.

U.S. Docks Hit by Theft

(Continued from Page One) In Seattle, a member of the police burglary and theft division said of pilferage arrests.

Black Newsmen Rebel at Spying For White World

NEW YORK (AP) — Seventy black newsmen say they will resist any attempt by investigators to see their unrecorded or unprinted notes, tapes or films.

Man Stabbed During Fight (Continued) Hospital officials said the man was taken to the emergency room, where he was treated for a chest wound.

AMC's Gremlin To Lead Invasion Against Beetle (Continued) The Gremlin, first subcompact or mini-car built by a major U.S. automaker, goes on sale April 1.

Christianity in Decline Amid Religious Boom (Continued) "The young seek to enter the transcendent world by drugs, the middle-aged by astrology, the old by religion."

Religious Business Booms In Anticipation of Eclipse (Continued) The increased religious fervor it turns out, is mostly the result of scientific activity.

U.S. Docks Hit by Theft (Continued) Police said the Patten told them Clyde drove into the yard about 4 p.m. and staged the robbery from his car.

Valentine Cards Large Selection Arthur Drug (Continued) Clean, Late Model USED CARS Top Prices Paid For All Makes!

Christianity in Decline Amid Religious Boom (Continued) "The young seek to enter the transcendent world by drugs, the middle-aged by astrology, the old by religion."

Religious Business Booms In Anticipation of Eclipse (Continued) The increased religious fervor it turns out, is mostly the result of scientific activity.

U.S. Docks Hit by Theft (Continued) Police said the Patten told them Clyde drove into the yard about 4 p.m. and staged the robbery from his car.

AMC's Gremlin To Lead Invasion Against Beetle (Continued) The Gremlin, first subcompact or mini-car built by a major U.S. automaker, goes on sale April 1.

Christianity in Decline Amid Religious Boom (Continued) "The young seek to enter the transcendent world by drugs, the middle-aged by astrology, the old by religion."

Religious Business Booms In Anticipation of Eclipse (Continued) The increased religious fervor it turns out, is mostly the result of scientific activity.

U.S. Docks Hit by Theft (Continued) Police said the Patten told them Clyde drove into the yard about 4 p.m. and staged the robbery from his car.

Valentine Cards Large Selection Arthur Drug (Continued) Clean, Late Model USED CARS Top Prices Paid For All Makes!

Christianity in Decline Amid Religious Boom (Continued) "The young seek to enter the transcendent world by drugs, the middle-aged by astrology, the old by religion."

Religious Business Booms In Anticipation of Eclipse (Continued) The increased religious fervor it turns out, is mostly the result of scientific activity.

TED TRUDON, Inc. FITZGERALD FORD INC. 1966 T-BIRD \$1795 1967 CARMEN GHIA \$1295 1963 GALAXIE XL \$695 1967 FALCON \$945 1968 CYCLONE \$1995 1967 PONTIAC \$1695 1967 FALCON \$1795 1965 GALAXIE 500 \$950 1966 FORD PICKUP \$1395 1968 MUSTANG \$1795 1966 GALAXIE 500 \$1095 1966 FORD UTILITY \$1495 1964 FORD WAGON \$645 1963 CHEVROLET NOVA SS \$595 1965 FORD UTILITY \$1195

Psst! How would you like to steal a couple of candle sconces without breaking a law? DILLON FORD BONUS SPECIALS

Moriarty Brothers Announce The Montego Special \$2399.00 DELIVERED! Mercury Montego Priced and Powered For Every Pocket

W. H. ENGLAND Lumber COMPANY and HARDWARE DIVISION ROUTE 44A - BOLTON NOTCH TELEPHONE 649-5201 OPEN ALL DAY SAT.

USED CARS 68 BUICK \$2595 67 OLDS \$1895 68 PONT. \$2495 67 OLDS \$1695 67 PONT. \$1995 65 FORD \$995 67 OLDS \$1995 65 PONT. \$1195 67 OLDS \$2195 65 FORD \$1195 67 OLDS \$2095 65 FORD \$1495 67 CHEV. \$1895 64 OLDS \$995 67 Dodge \$1795 64 CORV. \$695 67 OLDS \$1495 64 PONT. \$995

CARTER CHEVROLET CO., INC. 1227 Main St. - Open Evenings Hill 9 - Thurs. Hill 6 - Manchester

FITZGERALD FORD SALES INCORPORATED OPEN 8 A.M. TO 9 P.M. WINDSOR AVE. - ROUTE 83 ROCKVILLE 875-3369 643-2485

DILLON FORD BONUS SPECIALS 319 MAIN STREET MANCHESTER

DILLON SALES & SERVICE, INC. 319 MAIN STREET MANCHESTER

Dresden, German Hiroshima Still Recovering From War

By HALE BOYLE

NEW YORK (AP) — For years, his most patients, had idly wondered while sitting in the waiting rooms of doctors and dentists why they were stocked with old magazines from three months to 50 years out-of-date.

There must be some reason that current issues of any periodical were rarely, if ever, available. I decided to find out why.

After consulting the musty and dusty dens of several magazine dealers, I was referred to Mr. Irving F. Teetbaum, whose shop was in a third-floor walk-up near Times Square.

A small, elderly mystery man with an air of mystery, he admitted me grudgingly and suspiciously.

"Are you Mr. Irving F. Teetbaum?" I inquired.

"Maybe you should mistake me for Rock Hudson?" he parried.

"Mr. Teetbaum," I said, "I understand you're not dealing in back issues of magazines but in sold to doctors and dentists."

"I'm the biggest in the world," he said. "Tell me how likely you are to be surprised by the information in it. Most magazines, however, prefer magazines from 30 to 30 years out of date."

"Where do you get most of these magazines?"

"Some come from the cornerstones of old buildings being torn down and the magazines are bought from old doctors when they quit their practice. The other magazines come from the National Geographic. Most health articles it carries are about what the doctors and dentists kept old rather than new magazines in their offices."

"If they kept new magazines, their patients would steal them," he said. "And doctors and dentists are like everyone else—they have a distinct aversion to giving away something for nothing."

Police Log

ARRESTS

Vincent S. Holmes, 21, of Hartford, charged with two counts of shoplifting. He was arrested yesterday on a 12th Circuit Court warrant, in connection with the alleged theft of merchandise at Caldor's and Sears. He was released on \$500 non-surety bond for court appearance March 2.

Harry Lelcher, 49, of no certain address, charged with intoxication. He was arrested yesterday afternoon in the basement of a Main St. department store. Court date March 2.

Robert E. Wojcik, 27, of 68 Lakewood Dr., Coventry, charged with failure to obey a traffic control signal at Center and Broad Sts. Court date March 2.

Arthur Ashwell Jr., 17, of 102 Woodbridge St., charged with making unnecessary noise with a motor vehicle, and operating with an unsafe tire. He was arrested yesterday morning at the intersection of Center and Broad Sts. Court date March 2.

James E. Brown, 21, of 35 Battista Rd., charged with failure to obey a traffic control signal at Main and Park Sts. Court date March 2.

Kenneth W. Dowling, 17, of 35 Turnbull Rd., was charged with failure to obey a stop sign after an accident yesterday afternoon at the intersection of Turnbull Rd. and Main St. John St. Police said he was westbound on St. John St. through the intersection with and stopped, and struck the right side of a car driven by Anthony Lumbroso of 29 Foxcroft Rd. The Lumbroso car also to be towed. Court date March 2.

ACCIDENTS

James E. Brown, 21, of 35 Battista Rd., charged with failure to obey a traffic control signal at Main and Park Sts. Court date March 2.

Kenneth W. Dowling, 17, of 35 Turnbull Rd., was charged with failure to obey a stop sign after an accident yesterday afternoon at the intersection of Turnbull Rd. and Main St. John St. Police said he was westbound on St. John St. through the intersection with and stopped, and struck the right side of a car driven by Anthony Lumbroso of 29 Foxcroft Rd. The Lumbroso car also to be towed. Court date March 2.

COMPLAINTS

Two boys, aged 14 and 10, broke two overhead windows in the Krause-Pfeiffer residence on Hartford Rd. yesterday afternoon. The boys were observed throwing rocks at the windows, and police informed their parents, who promised to take appropriate measures. The boys were not identified because of their age.

Coventry School Panel Asked to Waive Liquor Ban at High School

The issue of liquor in the school gym for social functions is a controversial one, and again at last night's Board of Education meeting. Donald O'Mara, chairman of the dance committee for the Robertson School PTA, appears before the board to state his views on the matter, and say that the board will soon receive formal, written application for a spring PTA dance to be held in the high school gym with liquor allowed.

O'Mara, who said he was at the meeting for informal discussion of the liquor question, was not aware that there is a board policy that prohibits liquor on school property. He said he was aware, however, of the recent board decision to allow liquor in the gym for the File and Drum Ball, and that he understood the board's intent to review this decision at the next meeting. He said he was not aware that there is a board policy that prohibits liquor on school property. He said he was aware, however, of the recent board decision to allow liquor in the gym for the File and Drum Ball, and that he understood the board's intent to review this decision at the next meeting.

PLAZA DEPT. STORE

(We Have A Notion To Please)

E. MIDDLE TPK. (Next to Popular Mkt.)

OPEN WED., THURS., FRI. 11-8

VALENTINE CARDS, CANDY GIFTS AND PARTY FAVORS ARE ALL AT PLAZA!

APPLE SALE

Utility Grade McIntosh, Cortland, Red Delicious and Baldwin

\$1.75 16-qt. container reg. \$2.25

ORCHARD HILL

EVERY ST., WAPPING

THE HIGH SCHOOL WORLD

Compiled by Students of Manchester High School

Editor: Nancy Macomber, Feature Editor: Daisy Hunter

VOL. XXXII, No. 18 FRIDAY, FEBRUARY 13

Sports Editor: Jerry Katona, Senior Editor: Katherine Gibbs, Editor: Linda Jacobs

Mrs. Joyce Don, Faculty Advisor

Gay Arden Gives View Of America

The good and bad points of the United States as an outsider finds them, were discussed at the last APS meeting, by Gay Arden of London, England. Gay is temporarily living with a family in West Hartford and attended Oxford School.

A tour of MHS was a highlight of Gay's evening, and she seemed quite impressed by its large size and many facilities, since she has always gone to comparatively small schools. When she returns to England, she plans to attend Oxford University to major in history.

Because of her interest in history, Gay enjoys comparing her ideas of democracy to America and its politics. Topics of discussion in an informal question and answer period included studies, education, examinations, school systems to major in history.

Although Gay loves the people of America, she naturally has some criticisms. She pointed out the variety of football teams in the country, but she also feels that the American educational system is more competitive than that of other countries. Like or dislike what was anything I do.

Kathy Valda '71

Carlson's Chess Set Wins

Bruce Carlson, 70, has proven himself to be the master craftsman. His chess set of pewter and brass which won him \$25 from the Society of Chess Players and a year's membership in the Society and the opportunity to exhibit his chess set in society shows. He also has a chance for a full scholarship to a summer craft workshop in Connecticut. Congratulations are in order to Bruce for earning this distinctive award. (Somahan photo by Geyer)

Guidance Notes

Representatives visiting the MHS next week are: Monday — Bryan and Stratton, Boston, 8th period. Tuesday — Career Training Institute, Boston, 2nd period; Porter School of Engineering Design, Rocky Hill, 8th period. Wednesday — Aetna Fire Insurance Co., Hartford, 2nd period; Leicester Junior College, Leicester, Mass., at 10:15 a.m.; Katherine Gibbs Institute, Boston, 4th period. Friday, Feb. 20 — Haddam High School, Tiffin, Ohio, at 8:30 a.m.

Girl Cagers Chalk Up Sixth Victory

Manchester had another go at the win column with the girls basketball team. The Red Sox victory over Bombers High. After dropping a 40-29 battle against Plainville High, the girls made an all-out effort to gain their sixth win by the score of 34-27.

The game did, however, give the Red Sox trouble. Baskets and fouls were the key factors in the game. The Red Sox girls made an all-out effort to gain their sixth win by the score of 34-27.

Letter to the Editor

Hypocrisy and dishonesty are two characteristics which should be the most in others, especially in adults. Unfortunately a great number of us are guilty of both these things when it comes to education.

Everyone's campaigning against pollution these days; at the same time, many of us are still driving our cars, and creating it. Many of us are still driving our cars, and creating it. Many of us are still driving our cars, and creating it.

Wrestling Team Finishes Season

Manchester had another go at the win column with the girls basketball team. The Red Sox victory over Bombers High. After dropping a 40-29 battle against Plainville High, the girls made an all-out effort to gain their sixth win by the score of 34-27.

The game did, however, give the Red Sox trouble. Baskets and fouls were the key factors in the game. The Red Sox girls made an all-out effort to gain their sixth win by the score of 34-27.

Searching Seventies

The following members of the class in Eastern Connecticut College: Paige Adams, Kirkland College, N.Y.; Lynn Begea, College of Wooster, Ohio; Nancy Ferguson, U.S. Naval Academy, Annapolis, Md.; Lynn Begea, College of Wooster, Ohio; Nancy Ferguson, U.S. Naval Academy, Annapolis, Md.; Lynn Begea, College of Wooster, Ohio; Nancy Ferguson, U.S. Naval Academy, Annapolis, Md.

Merchants Menace The Shooting Stars

Number one spot in the boys' intramural league at State was the Merchants of Menace basketball team. The Shooting Stars last Thursday. The highly contested game went down to the last minutes as the M's and M's won.

With Bill Schultz, Java Burt, and Ralph Pemberton as the key players, the Merchants of Menace defeated the Shooting Stars 25-15. The Merchants of Menace defeated the Shooting Stars 25-15.

Classes Vie With Spirit

Now all the students of MHS have been given a chance to show their spirit. Feb. 13 has been set aside as Spirit Week. Each student in the school can show his spirit by making posters to be put up on the walls of the cafeteria. Each class has been given a wall and the end of the week the teachers will vote for the class with the most spirit.

There are a variety of posters. They denote class spirit, school spirit, and community spirit. Unless the weather gets better, it seems to be a very dominating character in a great deal. "MHS" has been the word of the day. Bristol Central and Hartford Public.

Vernon RHS Teachers Told: 'Turn On' as People

By JUNE LINTON

A former teacher told a large roomful of Rockville High School faculty members yesterday to "turn on" as people and remove the teacher image. The message was given in a series of addresses in a roomful of teachers and it results in a lot of loneliness.

The talk in the high school cafeteria yesterday was one in a series aimed at teachers and on the subject of drug abuse and was given by Dr. Robert Miller, director of the division of the State Department of Health. He was assisted in his talk by one of his counselors at Dartmouth, a former teacher who has written his own words illustrated the value of the parent-professional, parent-teacher relationship in the drug treatment program through experience.

Miller said that 40 million people are home to about 40 million people. They are no longer "dependent" on drugs. Some come voluntarily and some are sent by the courts. It is a temporary home for the purposes of rehabilitation and education, and its purpose is to re-center the person into society at a different level from the room which he dropped out.

Dr. Miller said people have many reasons for turning on drugs, but that one of the biggest is simply that their peers have gotten them to try it. Not so simple as the reasons why peers have so much influence.

"Young people, he said, give their own reasons, the misbehavior of parents perhaps, "I don't do it when I talk to that person."

Miller said that one of the biggest reasons for turning on drugs is simply that their peers have gotten them to try it. Not so simple as the reasons why peers have so much influence.

Teachers' Fair To Raise Funds For Scholarship

On March 21, the Manchester Federation of Teachers and the Manchester Education Association will combine their efforts in sponsoring a fair to benefit the Manchester Teachers' Scholarship Fund, which provides financial assistance to Manchester High School graduates attending college.

Mrs. Carol Thayer, teacher of English at MHS, is director of the fair, which will be held from 9:30 a.m. to 4 p.m. in the high school cafeteria.

The board also heard last night a letter from, in his own words, a "bitter taxpayer." Fred White of Cooper Lane, White's letter concerned himself with the school's financial needs. He said that the school's financial needs are a serious problem. He said that the school's financial needs are a serious problem.

GRAND OPENING GET ACQUAINTED SPECIAL

4 SHIRTS \$1.00

ON HANGER WITH YOUR DRY CLEANING

COMPARE THESE PRICES

Ladies' Suits 1.25, Plain Dresses 1.25, Skirts .49, Sweaters .49, Winter Coats 1.50, Rain Coats 1.25, Gar Coats 1.25, Slacks .49

Men's Suits 1.25, Sport Jackets .69, Gar Coats 1.25, Overcoats 1.50, Top Coats 1.25, Sport Shirts .49, Rain Coats 1.25

Coin-Op Special \$1.50 an 8-LB. LOAD WITH ANY REGULAR DRY CLEANING ABOVE

Legion of Honor

Cathy Spieckli is like a diamond reflecting the bright sun of life. With many sides and facets, she shines forth in many ways. She shines forth in many ways. She shines forth in many ways.

Accomplished in athletics, well-liked by everyone, clever and humorous, Ken Teford has had many successes. He will continue to uphold his philosophy of being "successful in anything I do."

Better known as Tex, Ken's athletic ability has been richly rewarded. Playing well in football, he was named MVP of the varsity football team this season. He was named MVP of the varsity football team this season.

Students See 'Joe Egg'

A group of interested students along with Mrs. Jarno, Mr. DeDon and Mr. Richmond saw the "Joe Egg" at the Hartford Stage Co. on Wednesday.

The play, written by Peter Nichols, was a tragedy in a simple, single living room set. In the play, a 10-year-old child who never was normal, and the point of the play was the question of his marriage.

The play projected feelings of loneliness and isolation. The play projected feelings of loneliness and isolation. The play projected feelings of loneliness and isolation.

MHS Sinks Three More Swim Teams

A thrilling final relay gave the Manchester High swimmers a narrow 84-81 win over host Plainville. The relay was won by the Manchester High swimmers.

The following hot lunches will be served in the Vernon school next week:

Monday, frankfurts on roll, pickles, potato chips, pepper and carrot sticks, butterscotch pudding and topping.

Tuesday, chopped beef steak, mashed potato, buttered corn, bread and butter and pears.

Wednesday, ravioli and meat sauce, buttered broccoli, roll and butter, jelly cubes and topping.

Thursday, toasted cheese sandwiches, tomatoes, pineapple-riche delight.

Friday, baked tuna and noodle casserole, buttered green beans, whole wheat bread and butter, applesauce and cookies. Milk is served with all meals.

Auto Club Roll Grow

Chicago — It took 38 years, from 1902 to 1940, for the American Automobile Association to enroll its first million members. Seven more years were required to reach 2 million members and more years—up to 1968, membership had doubled in demands for national and it has doubled again since.

A country wide union among teachers is resulting in demands for national and it has doubled again since.

Burns Bible

SPRINGFIELD, Mo. (AP) — The Assemblies of God, an evangelical denomination, has launched a \$20,000 fund-raising project to supply Bibles for Christians in inner-city areas.

It was too late for Dresden.

He then noted an order on a state-aided program under which inner-city children were to be sent to suburban schools.

Mister Donut

255 WEST MIDDLE TPK., MANCHESTER, CONN.

WELCOMES BACK TO BUSINESS OUR NEIGHBOR

Free Mister Donut Win A Portable TV

NOTHING TO BUY — SIMPLY FILL IN THE COUPON AND DEPOSIT IT IN OUR STORE

NAME _____

STREET _____

TOWN _____ STATE _____

DATE _____ PHONE _____

One Registration Per Family

Plus these following prizes donated by BURR CORNERS' MERCHANTS.

- Original Oil Paintings from Scharite Gallery
- \$5 Merchandise Certificate from Logna Mills
- Pair Electronic Stereo/Headphones from Electronic Jungle
- One Large Pizza from Mario's Italian Specialty Food Shops
- Shampoo and Set from Gazy's Spell of Beauty Salon

OPEN 10 A.M. to 8 P.M.

Mister Donut

255 WEST MIDDLE TPK., MANCHESTER, CONN.

WELCOMES BACK TO BUSINESS OUR NEIGHBOR

Free Mister Donut Win A Portable TV

NOTHING TO BUY — SIMPLY FILL IN THE COUPON AND DEPOSIT IT IN OUR STORE

NAME _____

STREET _____

TOWN _____ STATE _____

DATE _____ PHONE _____

One Registration Per Family

Plus these following prizes donated by BURR CORNERS' MERCHANTS.

- Original Oil Paintings from Scharite Gallery
- \$5 Merchandise Certificate from Logna Mills
- Pair Electronic Stereo/Headphones from Electronic Jungle
- One Large Pizza from Mario's Italian Specialty Food Shops
- Shampoo and Set from Gazy's Spell of Beauty Salon

OPEN 10 A.M. to 8 P.M.

Students reminded that library seats are reserved for those using library materials.

Students are reminded that library seats are reserved for those using library materials. Please do not go to the library unless you plan to use the materials available there.

Students reminded that library seats are reserved for those using library materials.

Students are reminded that library seats are reserved for those using library materials. Please do not go to the library unless you plan to use the materials available there.

Senior Girls' Sleep-In

Senior girls will have a sleep-in on Friday night. The girls will be sleeping in the school cafeteria. The girls will be sleeping in the school cafeteria.

Letter to the Students

To the girl who stole my room was stolen by P. Ferrell. I'm sorry you took my sleep-in on Monday, the first day of school. I'm sorry you took my sleep-in on Monday, the first day of school.



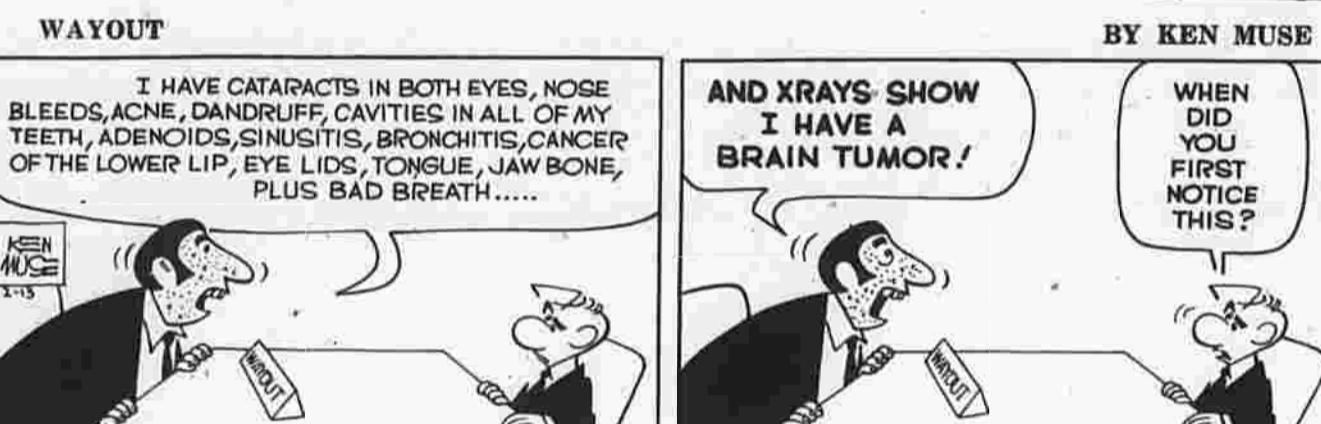
BUGS BUNNY



ALLEY OOP



DAVY JONES



WAYOUT



BUZZ SAWYER



MICKY FINN



MR. ABERNATHY



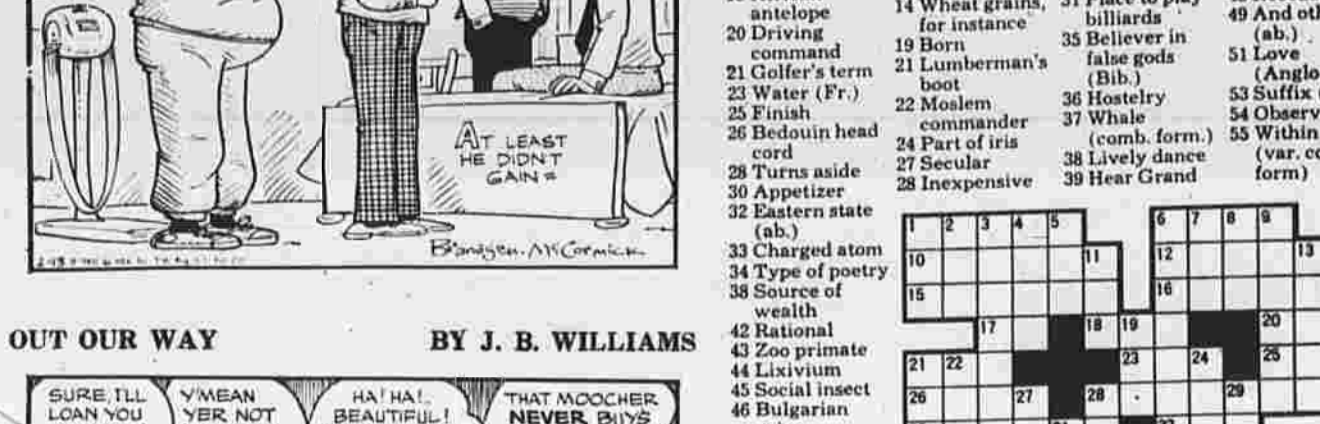
PRISCILLA'S POP



ROBIN MALONE



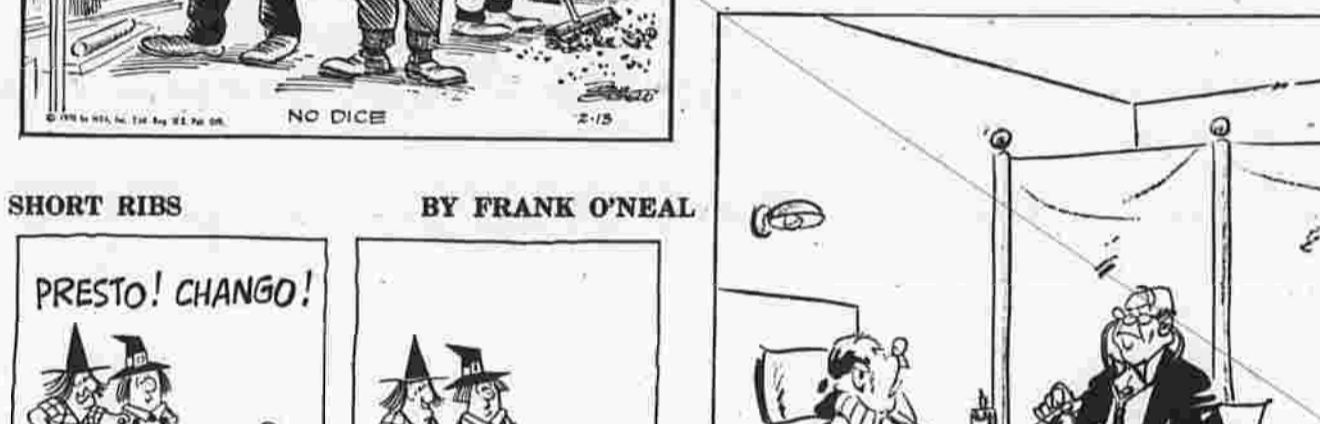
OUR BOARDING HOUSE with MAJOR HOOPLE



Visit to New York



OUT OUR WAY



CARNIVAL



SHORT RIBS



STEVE CANYON



WINTHROP



CAPTAIN EASY



LITTLE SPORTS

CLASSIFIED ADVERTISING. Classified Advertising Dept. Hours 8 A.M. to 4:30 P.M. COPY CLOSING TIME FOR CLASSIFIED ADVT. 4:30 P.M. DAY BEFORE PUBLICATION.

Trouble Reaching Our Advertiser? 24-Hour Answering Service Free to Herald Readers. Want information on one of our classified advertisements? No answer at the telephone listed? Simply call the EDWARDS ANSWERING SERVICE.

Automobiles For Sale. 1964 MERCURY Montclair 2-door hardtop. Automatic, V-8, power steering. No money down, full financing arranged.

HERALD BOX LETTERS. For Your Information. THE HERALD will not disclose the identity of any advertiser using box letters. Readers answering blind box ads desire to protect their identity can follow this procedure:

Lost and Found. LOST: Male, black and white tiger angora cat, wearing hospital, child's pet. Reward, \$49-7812.

Announcements. SMALL band - The Soft Tones, now available for small parties, weddings, office parties, etc. Mature musicians. Call 643-6087.

Auto Accessories - Tires. 327 CHEVY engine, 6 1/2 over valves. Best offer, \$49-088.

Auto Accessories - Tires. 1968 FORD 2-door hardtop, V-8, automatic, \$1,350. Stop at Savings Bank of Manchester, 644-1700.

Business Services Offered. EXPERT DRYWALL work done. Sheetrock, taping, sandblasting ceilings. Also painting a d paper hanging. Call Ron, 643-4928.

Business Services Offered. EXPERT DRYWALL work done. Sheetrock, taping, sandblasting ceilings. Also painting a d paper hanging. Call Ron, 643-4928.

Help Wanted - Female. KEYPUNCH OPERATOR. Operating for experienced Alphanumeric TTY keypuncher to work full-time days.

Help Wanted - Male. RETIRED gentleman for light maintenance on daily basis at office building, 18-19 hours weekly. \$100 a week.

Help Wanted - Male. OPERATORS WANTED AT S N E T IN MANCHESTER. You need no previous experience. We'll train you on a go.

Legal Notices. The Connecticut Bureau of Transportation, Bureau of Administration will accept bids on February 18, 1970, at 10:30 a.m., EST, covering the Cleaning of Septic Tanks & Vaults at Plum Area located in Districts I & II.

Legal Notices. AT A COURT OF PROBATE, held at Manchester, within and for the County of Manchester, on the 9th day of February, 1970.

Legal Notices. AT A COURT OF PROBATE, held at Manchester, within and for the County of Manchester, on the 9th day of February, 1970.

Legal Notices. AT A COURT OF PROBATE, held at Manchester, within and for the County of Manchester, on the 9th day of February, 1970.

Legal Notices. AT A COURT OF PROBATE, held at Manchester, within and for the County of Manchester, on the 9th day of February, 1970.

BERRY'S WORLD. EXPERT DRYWALL work done. Sheetrock, taping, sandblasting ceilings. Also painting a d paper hanging. Call Ron, 643-4928.

Help Wanted - Female. KEYPUNCH OPERATOR. Operating for experienced Alphanumeric TTY keypuncher to work full-time days.

Help Wanted - Male. RETIRED gentleman for light maintenance on daily basis at office building, 18-19 hours weekly. \$100 a week.

Help Wanted - Male. OPERATORS WANTED AT S N E T IN MANCHESTER. You need no previous experience. We'll train you on a go.

Legal Notices. The Connecticut Bureau of Transportation, Bureau of Administration will accept bids on February 18, 1970, at 10:30 a.m., EST, covering the Cleaning of Septic Tanks & Vaults at Plum Area located in Districts I & II.

Legal Notices. AT A COURT OF PROBATE, held at Manchester, within and for the County of Manchester, on the 9th day of February, 1970.

Legal Notices. AT A COURT OF PROBATE, held at Manchester, within and for the County of Manchester, on the 9th day of February, 1970.

Legal Notices. AT A COURT OF PROBATE, held at Manchester, within and for the County of Manchester, on the 9th day of February, 1970.

Legal Notices. AT A COURT OF PROBATE, held at Manchester, within and for the County of Manchester, on the 9th day of February, 1970.

Help Wanted - Female. KEYPUNCH OPERATOR. Operating for experienced Alphanumeric TTY keypuncher to work full-time days.

Help Wanted - Male. RETIRED gentleman for light maintenance on daily basis at office building, 18-19 hours weekly. \$100 a week.

Help Wanted - Male. OPERATORS WANTED AT S N E T IN MANCHESTER. You need no previous experience. We'll train you on a go.

Legal Notices. The Connecticut Bureau of Transportation, Bureau of Administration will accept bids on February 18, 1970, at 10:30 a.m., EST, covering the Cleaning of Septic Tanks & Vaults at Plum Area located in Districts I & II.

Legal Notices. AT A COURT OF PROBATE, held at Manchester, within and for the County of Manchester, on the 9th day of February, 1970.

Legal Notices. AT A COURT OF PROBATE, held at Manchester, within and for the County of Manchester, on the 9th day of February, 1970.

Legal Notices. AT A COURT OF PROBATE, held at Manchester, within and for the County of Manchester, on the 9th day of February, 1970.

Legal Notices. AT A COURT OF PROBATE, held at Manchester, within and for the County of Manchester, on the 9th day of February, 1970.

Legal Notices. AT A COURT OF PROBATE, held at Manchester, within and for the County of Manchester, on the 9th day of February, 1970.

Help Wanted - Female. KEYPUNCH OPERATOR. Operating for experienced Alphanumeric TTY keypuncher to work full-time days.

Help Wanted - Male. RETIRED gentleman for light maintenance on daily basis at office building, 18-19 hours weekly. \$100 a week.

Help Wanted - Male. OPERATORS WANTED AT S N E T IN MANCHESTER. You need no previous experience. We'll train you on a go.

Legal Notices. The Connecticut Bureau of Transportation, Bureau of Administration will accept bids on February 18, 1970, at 10:30 a.m., EST, covering the Cleaning of Septic Tanks & Vaults at Plum Area located in Districts I & II.

Legal Notices. AT A COURT OF PROBATE, held at Manchester, within and for the County of Manchester, on the 9th day of February, 1970.

Legal Notices. AT A COURT OF PROBATE, held at Manchester, within and for the County of Manchester, on the 9th day of February, 1970.

Legal Notices. AT A COURT OF PROBATE, held at Manchester, within and for the County of Manchester, on the 9th day of February, 1970.

Legal Notices. AT A COURT OF PROBATE, held at Manchester, within and for the County of Manchester, on the 9th day of February, 1970.

Legal Notices. AT A COURT OF PROBATE, held at Manchester, within and for the County of Manchester, on the 9th day of February, 1970.

CLASSIFIED ADVERTISING
 CLASSIFIED ADVERTISING DEPT. HOURS
 8 A.M. TO 4:30 P.M.
 COPIES CLOSING TIME FOR CLASSIFIED ADVT
 (4:30 P.M. DAY BEFORE PUBLICATION)
 Deadline for Saturday and Monday is 4:30 p.m. Friday
 YOUR COOPERATION WILL BE APPRECIATED
DIAL 643-2711

Continued From Preceding Page
Help Wanted—Male 36
WANTED—Man to work in HARDWARE store clerk, apply part-time, either full-time or in person. Barrett Plumbing Party-time, contact Mr. Keeney, Supply, 31 Board St. Closed 9:30-10:30 p.m. Wednesdays.
FART-TIME gas station at DISHWASHER wanted for attendant afternoons/Old man Saturday nights. Apply Ca with experience preferred. 709's Restaurant, 45 E. Center St. 410-4100 after 3 p.m.

TOY AND SPORTING GOODS SALESMAN
 Excellent opportunity for a sports enthusiast who enjoys meeting the public and has a flair for selling. This unique position is with a well established national retail chain undergoing rapid expansion in a new toy and sporting goods store. Prior retail and/or selling experience desirable but not essential.
 Excellent starting salary, comprehensive fringe benefit program, congenial working conditions and employee discount. Advancement based on your own initiative and ability.
 Apply in person, 10 a.m.-10 p.m. to Mr. Frank Abbruzese

Help Wanted—Male or Female 37
HELP WANTED male or female to transport and deliver goods. Must be a driver with a valid license. Good opportunity for right person willing to work. Apply to "ADDY" Manchester Herald.
SALESMAN—Full or part-time. Selling, Camp, Y, etc. Wide market in Eastern Mass. Custom products: Knit goods, jackets, gym suits, etc. Sales, award letters, etc. Only hustlers need apply. Sporting Goods or School sales. No experience necessary. Interview with American Knitwear & Textiles Mfrs., Thaleson, N.H. 03565.
Salesmen Wanted 36-A
 FULL-TIME real estate salesmen wanted for expanding local real estate agency. Good opportunity for right person willing to work. Apply to "ADDY" Manchester Herald.
Help Wanted—Male or Female 37
HELP WANTED male or female to transport and deliver goods. Must be a driver with a valid license. Good opportunity for right person willing to work. Apply to "ADDY" Manchester Herald.
PUNCH PRESS operator wanted. No experience necessary. Apply in person. Apply to "ADDY" Manchester Herald.
Apply in person, 10 a.m.-10 p.m. to Mr. Frank Abbruzese

WONDERLAND TOY & SPORTING GOODS
 Hartford Rd. and Pine St., Manchester
 An equal opportunity employer

LOOKING for man who is in BIG BORE Operators—First need of permanent, part-time, evening Friday and Saturday evenings. Part-time and appearance important. Excellent incentive program. Write to box 181 Manchester Herald.
WOODWORKING DEPARTMENT FOREMAN
 Experienced man for supervising high quality custom work. Excellent opportunity. DISPLAY-CRAFT 643-9557
BULLDOZER trainees needed. See Schools and Classes, 522-2641 or visit us at 101 Park Ave., East Hartford.
BAKERY DEPARTMENT
 Porter for cake department, highest rates, 8-hour shift, overtime after 8 hours, full fringe benefit program. Apply at employment office.
FIRST NATIONAL STORES
 PARK & OAKLAND AVENUE, EAST HARTFORD, CONN.
DRIVERS for school buses, 7:30 - 4:45 a.m. 215 - 3:45 p.m. Excellent part-time for third shift worker or retired person. Premium wage scale. Roberts Electric Co., 644-2414.

HELPERS for furniture moving and warehouse crew for Hartford Dispatch Operations Center in East Hartford. Steady employment. Good opportunity for men who want to learn the moving business. Top physical condition, references required. Apply Mr. Hixson, 522-2641 or visit us at 101 Park Ave., East Hartford.
ROUTE DRIVER for wholesale route, 8-day week. Apply in person only. Willard Lane Service, c/o Fisher Dry Cleaners, 323 Broad St., Manchester.
LATHE OPERATOR
 Apply: E & S GAGE CO. Mitchell Drive Manchester, Conn.

Part-time, 5 nights, wash and wax floors. Call 649-5334.
ELECTRICIAN—Journeyman. Top wages with benefits. Call between 8 a.m. and 5 p.m. 642-9026. Roberts Electric Co., 644-2414.
Model Home Furniture
3 ROOM HOUSEFUL 19 PIECES \$297
 Interior Designer wants reliable family or newlyweds to accept delivery of complete Model Display of Quality Furniture just removed to warehouse for Public Sale. Modern 3 complete rooms with the \$1,000, 6 pc. Convertible Living room, 6 pc. bedroom, 5 pc. Dinette, 10 pc. dining, you may purchase any room individually. Immediate delivery or free storage.
CAP & CUP Chair Plans
 24" with cabinet, instant credit plan.
DISCOUNT FURNITURE WAREHOUSE
 NOW 2 BIG LOCATIONS
 3380 Main St., Hartford 822-7249
 (former Fuller Brush Bldg.)
 175 Pine St., Manchester 646-2322
 (former Warehouse)
 at corner of Pine & Forest Sts. Mon.-Fri. 9:30 - 9:4

Jacobs
SET-UP MAN
ATOMIC SCREW MACHINE
 An immediate night shift opening for an experienced man with proven ability.
 • High Earnings
 • Scheduled Overtime
 • Non-Defense Industry
 • Excellent Benefits
 The Jacobs Manufacturing Company
 1 Jacobs Road, West Hartford, Connecticut
 233-4411
 An equal opportunity employer M/F

THEY OUGHTA BE A LAW
BUT ON OCCASION SHE CAN SPOT A PIMPLE ON A FLY
A BLOND HAIR
OF COURSE YOU DO
THIS SUIT YOU WERE A BLOND

Articles For Sale 45
 1970, 21 volume set of Encyclopaedia Britannica with extra. Never used. Call 742-9444 after 5 p.m.
Household Goods 51
 LIVING ROOM sofa, 4 chairs, 4 tables, lamps, television, 649-6145 after 5.
 SEWING machine—Singer zig-zag, buttonholes, hems, fancy zig-zag. Originally \$100. Now \$300, full price now \$51. Easy terms. 643-2011, dealer.
 REFRIGERATOR, Stove, built-in cabinets, dishwasher, bedroom furniture. 645-9074 after 7 p.m.
Musical Instruments 53
 FENDER reverb amplifier with guitar and stand up mike. Less than one year old. \$160. 649-1877 after 6 p.m.
 BALDWIN Acrosonic spinet piano, \$485. Call 647-1112.
 SET OF COLUMNS, \$100 with power unit. 643-9737.
Office and Store Equipment 54
 AUTOMATIC addressing system. Addressograph, 900B printer with desk, cabinet and filing drawers plus 700 copies. \$125. Call after 5 p.m., 646-2226.
Wanted—To Buy 58
 HOUSEHOLDS lots—Antiques, furniture, glassware, etc. Buy estates. Village Peddler, Auctioneer, 420 Main St., East Hartford, 645-8129.
 WANTED—Antique furniture, glass, pewter, oil paintings or other antique items. Any quantity. Call Paul W. Dougan, Realtor, 649-4533.
Furnished Apartments 63-A
 NEW 3-room furnished apartment, good location, reasonable rent. 649-2282.
Rooms Without Board 59
 ROOM for rent, gentleman only, central location, free parking, references required. 643-2000, 649-8150.
Household Goods 51
 CLEAN, USED refrigerators, ranges, automatic washers with guarantees. See them at E.D. Farn's Appliances, 649 Main St., Call 645-2171.
 RIG, acrylin, blue and green tweed, 12 x 14, like new. Cost \$225, price \$158. 458-4266.
 SINGER automatic 4 1/2" zig-zag with cabinet, convertible to portable, built-in, hems, monograms, etc. \$100. 642-9026.
 FURK LIFT—4,000 pound capacity. Lift to 30'. \$4,000. Call 642-9026.
 CARPETS a right! Make them a beautiful sight with Blue Lustre. Rent electric shampoos \$1. Olcott Variety Store, 410-9113.
 AM-PM Zenith stereo, regularly \$49.95, now on sale at \$42.95. 1070 Zenith 12" portable. TV's regularly \$99.95, now on sale at \$89.95. Reconditioned and guaranteed color TV consoles with new picture tubes now \$199.95. Modern TV sets, \$69. 649-1877 after 5 p.m.

Out of Town For Rent 66
 ROCKVILLE—New 3 1/2-room apartment with private terrace and pool including heat, water, gas, electric, parking. \$150. Rockland Terrace Apartments, Highland Ave., 872-4006, 872-3775.
 ROCKVILLE—four-room, fully furnished apartment. \$125 monthly. Adults only. Available March 1st. Call 648-9878.
 ELLINGTON—3 1/2-room apartment, redecorated, new appliances, heated, air-conditioned, garage. Utilities included. \$145. Call 874-4740.
Resort Property For Rent 67
 MARTHA'S Vineyard, water-front cottage, sleeps three. Phone 742-8885.
Wanted To Rent 68
 LACK of car plus living cost creates special need for workable car. Original owner, daughter, searching for apartment (heat included) vicinity of Manchester High at downtown rental. Call 649-8583 between 8:30-7:30 p.m.
 COUPLE with 2 well behaved children and pet desires 3 bedroom, hot water, basement garage. Adults preferred. Call after 6 p.m. 645-9074.
 FAMILY of four adults desires 5 or 6 room apartment in Manchester area. Call 643-1055, Ext. 22.
Business Property For Sale 70
 MANCHESTER—20,000 square foot masonry industrial building, 1 1/2 acres, central location, all utilities. Many possibilities, including commercial use. Hayes Agency, 646-0131.
Investment Property For Sale 70-A
 PEARL St.—A 16-room duplex home. Handy to schools and Main St. Dwellings is currently occupied as rooming house showing a fine return on investment. To reconstruct property to standard 2-family dwelling would require but a minimum amount of money. For information about this well built home in an excellent neighborhood, please call Robert J. Smith, Inc., 903 Main St., Manchester.
 FIVE 1 1/2 units, good income, 649-6568. Eight units, \$70,000. Wolverton Agency, Realtors, 649-2213.
Two Ten Apartments 63-B
 LUXURIOUS walk-to-work, carpeting throughout, range, refrigerator, disposal, dishwasher, central air conditioning, tiled bath.
 Heat and hot water furnished.
 \$186 MONTHLY
 Warren C. Howard, Realtor 643-1186

Out of Town For Rent 66
 ROCKVILLE—New 3 1/2-room apartment with private terrace and pool including heat, water, gas, electric, parking. \$150. Rockland Terrace Apartments, Highland Ave., 872-4006, 872-3775.
 ROCKVILLE—four-room, fully furnished apartment. \$125 monthly. Adults only. Available March 1st. Call 648-9878.
 ELLINGTON—3 1/2-room apartment, redecorated, new appliances, heated, air-conditioned, garage. Utilities included. \$145. Call 874-4740.
Resort Property For Rent 67
 MARTHA'S Vineyard, water-front cottage, sleeps three. Phone 742-8885.
Wanted To Rent 68
 LACK of car plus living cost creates special need for workable car. Original owner, daughter, searching for apartment (heat included) vicinity of Manchester High at downtown rental. Call 649-8583 between 8:30-7:30 p.m.
 COUPLE with 2 well behaved children and pet desires 3 bedroom, hot water, basement garage. Adults preferred. Call after 6 p.m. 645-9074.
 FAMILY of four adults desires 5 or 6 room apartment in Manchester area. Call 643-1055, Ext. 22.
Business Property For Sale 70
 MANCHESTER—20,000 square foot masonry industrial building, 1 1/2 acres, central location, all utilities. Many possibilities, including commercial use. Hayes Agency, 646-0131.
Investment Property For Sale 70-A
 PEARL St.—A 16-room duplex home. Handy to schools and Main St. Dwellings is currently occupied as rooming house showing a fine return on investment. To reconstruct property to standard 2-family dwelling would require but a minimum amount of money. For information about this well built home in an excellent neighborhood, please call Robert J. Smith, Inc., 903 Main St., Manchester.
 FIVE 1 1/2 units, good income, 649-6568. Eight units, \$70,000. Wolverton Agency, Realtors, 649-2213.
Two Ten Apartments 63-B
 LUXURIOUS walk-to-work, carpeting throughout, range, refrigerator, disposal, dishwasher, central air conditioning, tiled bath.
 Heat and hot water furnished.
 \$186 MONTHLY
 Warren C. Howard, Realtor 643-1186

Out of Town For Rent 66
 ROCKVILLE—New 3 1/2-room apartment with private terrace and pool including heat, water, gas, electric, parking. \$150. Rockland Terrace Apartments, Highland Ave., 872-4006, 872-3775.
 ROCKVILLE—four-room, fully furnished apartment. \$125 monthly. Adults only. Available March 1st. Call 648-9878.
 ELLINGTON—3 1/2-room apartment, redecorated, new appliances, heated, air-conditioned, garage. Utilities included. \$145. Call 874-4740.
Resort Property For Rent 67
 MARTHA'S Vineyard, water-front cottage, sleeps three. Phone 742-8885.
Wanted To Rent 68
 LACK of car plus living cost creates special need for workable car. Original owner, daughter, searching for apartment (heat included) vicinity of Manchester High at downtown rental. Call 649-8583 between 8:30-7:30 p.m.
 COUPLE with 2 well behaved children and pet desires 3 bedroom, hot water, basement garage. Adults preferred. Call after 6 p.m. 645-9074.
 FAMILY of four adults desires 5 or 6 room apartment in Manchester area. Call 643-1055, Ext. 22.
Business Property For Sale 70
 MANCHESTER—20,000 square foot masonry industrial building, 1 1/2 acres, central location, all utilities. Many possibilities, including commercial use. Hayes Agency, 646-0131.
Investment Property For Sale 70-A
 PEARL St.—A 16-room duplex home. Handy to schools and Main St. Dwellings is currently occupied as rooming house showing a fine return on investment. To reconstruct property to standard 2-family dwelling would require but a minimum amount of money. For information about this well built home in an excellent neighborhood, please call Robert J. Smith, Inc., 903 Main St., Manchester.
 FIVE 1 1/2 units, good income, 649-6568. Eight units, \$70,000. Wolverton Agency, Realtors, 649-2213.
Two Ten Apartments 63-B
 LUXURIOUS walk-to-work, carpeting throughout, range, refrigerator, disposal, dishwasher, central air conditioning, tiled bath.
 Heat and hot water furnished.
 \$186 MONTHLY
 Warren C. Howard, Realtor 643-1186

Out of Town For Rent 66
 ROCKVILLE—New 3 1/2-room apartment with private terrace and pool including heat, water, gas, electric, parking. \$150. Rockland Terrace Apartments, Highland Ave., 872-4006, 872-3775.
 ROCKVILLE—four-room, fully furnished apartment. \$125 monthly. Adults only. Available March 1st. Call 648-9878.
 ELLINGTON—3 1/2-room apartment, redecorated, new appliances, heated, air-conditioned, garage. Utilities included. \$145. Call 874-4740.
Resort Property For Rent 67
 MARTHA'S Vineyard, water-front cottage, sleeps three. Phone 742-8885.
Wanted To Rent 68
 LACK of car plus living cost creates special need for workable car. Original owner, daughter, searching for apartment (heat included) vicinity of Manchester High at downtown rental. Call 649-8583 between 8:30-7:30 p.m.
 COUPLE with 2 well behaved children and pet desires 3 bedroom, hot water, basement garage. Adults preferred. Call after 6 p.m. 645-9074.
 FAMILY of four adults desires 5 or 6 room apartment in Manchester area. Call 643-1055, Ext. 22.
Business Property For Sale 70
 MANCHESTER—20,000 square foot masonry industrial building, 1 1/2 acres, central location, all utilities. Many possibilities, including commercial use. Hayes Agency, 646-0131.
Investment Property For Sale 70-A
 PEARL St.—A 16-room duplex home. Handy to schools and Main St. Dwellings is currently occupied as rooming house showing a fine return on investment. To reconstruct property to standard 2-family dwelling would require but a minimum amount of money. For information about this well built home in an excellent neighborhood, please call Robert J. Smith, Inc., 903 Main St., Manchester.
 FIVE 1 1/2 units, good income, 649-6568. Eight units, \$70,000. Wolverton Agency, Realtors, 649-2213.
Two Ten Apartments 63-B
 LUXURIOUS walk-to-work, carpeting throughout, range, refrigerator, disposal, dishwasher, central air conditioning, tiled bath.
 Heat and hot water furnished.
 \$186 MONTHLY
 Warren C. Howard, Realtor 643-1186

Out of Town For Rent 66
 ROCKVILLE—New 3 1/2-room apartment with private terrace and pool including heat, water, gas, electric, parking. \$150. Rockland Terrace Apartments, Highland Ave., 872-4006, 872-3775.
 ROCKVILLE—four-room, fully furnished apartment. \$125 monthly. Adults only. Available March 1st. Call 648-9878.
 ELLINGTON—3 1/2-room apartment, redecorated, new appliances, heated, air-conditioned, garage. Utilities included. \$145. Call 874-4740.
Resort Property For Rent 67
 MARTHA'S Vineyard, water-front cottage, sleeps three. Phone 742-8885.
Wanted To Rent 68
 LACK of car plus living cost creates special need for workable car. Original owner, daughter, searching for apartment (heat included) vicinity of Manchester High at downtown rental. Call 649-8583 between 8:30-7:30 p.m.
 COUPLE with 2 well behaved children and pet desires 3 bedroom, hot water, basement garage. Adults preferred. Call after 6 p.m. 645-9074.
 FAMILY of four adults desires 5 or 6 room apartment in Manchester area. Call 643-1055, Ext. 22.
Business Property For Sale 70
 MANCHESTER—20,000 square foot masonry industrial building, 1 1/2 acres, central location, all utilities. Many possibilities, including commercial use. Hayes Agency, 646-0131.
Investment Property For Sale 70-A
 PEARL St.—A 16-room duplex home. Handy to schools and Main St. Dwellings is currently occupied as rooming house showing a fine return on investment. To reconstruct property to standard 2-family dwelling would require but a minimum amount of money. For information about this well built home in an excellent neighborhood, please call Robert J. Smith, Inc., 903 Main St., Manchester.
 FIVE 1 1/2 units, good income, 649-6568. Eight units, \$70,000. Wolverton Agency, Realtors, 649-2213.
Two Ten Apartments 63-B
 LUXURIOUS walk-to-work, carpeting throughout, range, refrigerator, disposal, dishwasher, central air conditioning, tiled bath.
 Heat and hot water furnished.
 \$186 MONTHLY
 Warren C. Howard, Realtor 643-1186

Out of Town For Rent 66
 ROCKVILLE—New 3 1/2-room apartment with private terrace and pool including heat, water, gas, electric, parking. \$150. Rockland Terrace Apartments, Highland Ave., 872-4006, 872-3775.
 ROCKVILLE—four-room, fully furnished apartment. \$125 monthly. Adults only. Available March 1st. Call 648-9878.
 ELLINGTON—3 1/2-room apartment, redecorated, new appliances, heated, air-conditioned, garage. Utilities included. \$145. Call 874-4740.
Resort Property For Rent 67
 MARTHA'S Vineyard, water-front cottage, sleeps three. Phone 742-8885.
Wanted To Rent 68
 LACK of car plus living cost creates special need for workable car. Original owner, daughter, searching for apartment (heat included) vicinity of Manchester High at downtown rental. Call 649-8583 between 8:30-7:30 p.m.
 COUPLE with 2 well behaved children and pet desires 3 bedroom, hot water, basement garage. Adults preferred. Call after 6 p.m. 645-9074.
 FAMILY of four adults desires 5 or 6 room apartment in Manchester area. Call 643-1055, Ext. 22.
Business Property For Sale 70
 MANCHESTER—20,000 square foot masonry industrial building, 1 1/2 acres, central location, all utilities. Many possibilities, including commercial use. Hayes Agency, 646-0131.
Investment Property For Sale 70-A
 PEARL St.—A 16-room duplex home. Handy to schools and Main St. Dwellings is currently occupied as rooming house showing a fine return on investment. To reconstruct property to standard 2-family dwelling would require but a minimum amount of money. For information about this well built home in an excellent neighborhood, please call Robert J. Smith, Inc., 903 Main St., Manchester.
 FIVE 1 1/2 units, good income, 649-6568. Eight units, \$70,000. Wolverton Agency, Realtors, 649-2213.
Two Ten Apartments 63-B
 LUXURIOUS walk-to-work, carpeting throughout, range, refrigerator, disposal, dishwasher, central air conditioning, tiled bath.
 Heat and hot water furnished.
 \$186 MONTHLY
 Warren C. Howard, Realtor 643-1186

Out of Town For Rent 66
 ROCKVILLE—New 3 1/2-room apartment with private terrace and pool including heat, water, gas, electric, parking. \$150. Rockland Terrace Apartments, Highland Ave., 872-4006, 872-3775.
 ROCKVILLE—four-room, fully furnished apartment. \$125 monthly. Adults only. Available March 1st. Call 648-9878.
 ELLINGTON—3 1/2-room apartment, redecorated, new appliances, heated, air-conditioned, garage. Utilities included. \$145. Call 874-4740.
Resort Property For Rent 67
 MARTHA'S Vineyard, water-front cottage, sleeps three. Phone 742-8885.
Wanted To Rent 68
 LACK of car plus living cost creates special need for workable car. Original owner, daughter, searching for apartment (heat included) vicinity of Manchester High at downtown rental. Call 649-8583 between 8:30-7:30 p.m.
 COUPLE with 2 well behaved children and pet desires 3 bedroom, hot water, basement garage. Adults preferred. Call after 6 p.m. 645-9074.
 FAMILY of four adults desires 5 or 6 room apartment in Manchester area. Call 643-1055, Ext. 22.
Business Property For Sale 70
 MANCHESTER—20,000 square foot masonry industrial building, 1 1/2 acres, central location, all utilities. Many possibilities, including commercial use. Hayes Agency, 646-0131.
Investment Property For Sale 70-A
 PEARL St.—A 16-room duplex home. Handy to schools and Main St. Dwellings is currently occupied as rooming house showing a fine return on investment. To reconstruct property to standard 2-family dwelling would require but a minimum amount of money. For information about this well built home in an excellent neighborhood, please call Robert J. Smith, Inc., 903 Main St., Manchester.
 FIVE 1 1/2 units, good income, 649-6568. Eight units, \$70,000. Wolverton Agency, Realtors, 649-2213.
Two Ten Apartments 63-B
 LUXURIOUS walk-to-work, carpeting throughout, range, refrigerator, disposal, dishwasher, central air conditioning, tiled bath.
 Heat and hot water furnished.
 \$186 MONTHLY
 Warren C. Howard, Realtor 643-1186

Out of Town For Rent 66
 ROCKVILLE—New 3 1/2-room apartment with private terrace and pool including heat, water, gas, electric, parking. \$150. Rockland Terrace Apartments, Highland Ave., 872-4006, 872-3775.
 ROCKVILLE—four-room, fully furnished apartment. \$125 monthly. Adults only. Available March 1st. Call 648-9878.
 ELLINGTON—3 1/2-room apartment, redecorated, new appliances, heated, air-conditioned, garage. Utilities included. \$145. Call 874-4740.
Resort Property For Rent 67
 MARTHA'S Vineyard, water-front cottage, sleeps three. Phone 742-8885.
Wanted To Rent 68
 LACK of car plus living cost creates special need for workable car. Original owner, daughter, searching for apartment (heat included) vicinity of Manchester High at downtown rental. Call 649-8583 between 8:30-7:30 p.m.
 COUPLE with 2 well behaved children and pet desires 3 bedroom, hot water, basement garage. Adults preferred. Call after 6 p.m. 645-9074.
 FAMILY of four adults desires 5 or 6 room apartment in Manchester area. Call 643-1055, Ext. 22.
Business Property For Sale 70
 MANCHESTER—20,000 square foot masonry industrial building, 1 1/2 acres, central location, all utilities. Many possibilities, including commercial use. Hayes Agency, 646-0131.
Investment Property For Sale 70-A
 PEARL St.—A 16-room duplex home. Handy to schools and Main St. Dwellings is currently occupied as rooming house showing a fine return on investment. To reconstruct property to standard 2-family dwelling would require but a minimum amount of money. For information about this well built home in an excellent neighborhood, please call Robert J. Smith, Inc., 903 Main St., Manchester.
 FIVE 1 1/2 units, good income, 649-6568. Eight units, \$70,000. Wolverton Agency, Realtors, 649-2213.
Two Ten Apartments 63-B
 LUXURIOUS walk-to-work, carpeting throughout, range, refrigerator, disposal, dishwasher, central air conditioning, tiled bath.
 Heat and hot water furnished.
 \$186 MONTHLY
 Warren C. Howard, Realtor 643-1186

Out of Town For Rent 66
 ROCKVILLE—New 3 1/2-room apartment with private terrace and pool including heat, water, gas, electric, parking. \$150. Rockland Terrace Apartments, Highland Ave., 872-4006, 872-3775.
 ROCKVILLE—four-room, fully furnished apartment. \$125 monthly. Adults only. Available March 1st. Call 648-9878.
 ELLINGTON—3 1/2-room apartment, redecorated, new appliances, heated, air-conditioned, garage. Utilities included. \$145. Call 874-4740.
Resort Property For Rent 67
 MARTHA'S Vineyard, water-front cottage, sleeps three. Phone 742-8885.
Wanted To Rent 68
 LACK of car plus living cost creates special need for workable car. Original owner, daughter, searching for apartment (heat included) vicinity of Manchester High at downtown rental. Call 649-8583 between 8:30-7:30 p.m.
 COUPLE with 2 well behaved children and pet desires 3 bedroom, hot water, basement garage. Adults preferred. Call after 6 p.m. 645-9074.
 FAMILY of four adults desires 5 or 6 room apartment in Manchester area. Call 643-1055, Ext. 22.
Business Property For Sale 70
 MANCHESTER—20,000 square foot masonry industrial building, 1 1/2 acres, central location, all utilities. Many possibilities, including commercial use. Hayes Agency, 646-0131.
Investment Property For Sale 70-A
 PEARL St.—A 16-room duplex home. Handy to schools and Main St. Dwellings is currently occupied as rooming house showing a fine return on investment. To reconstruct property to standard 2-family dwelling would require but a minimum amount of money. For information about this well built home in an excellent neighborhood, please call Robert J. Smith, Inc., 903 Main St., Manchester.
 FIVE 1 1/2 units, good income, 649-6568. Eight units, \$70,000. Wolverton Agency, Realtors, 649-2213.
Two Ten Apartments 63-B
 LUXURIOUS walk-to-work, carpeting throughout, range, refrigerator, disposal, dishwasher, central air conditioning, tiled bath.
 Heat and hot water furnished.
 \$186 MONTHLY
 Warren C. Howard, Realtor 643-1186

Out of Town For Rent 66
 ROCKVILLE—New 3 1/2-room apartment with private terrace and pool including heat, water, gas, electric, parking. \$150. Rockland Terrace Apartments, Highland Ave., 872-4006, 872-3775.
 ROCKVILLE—four-room, fully furnished apartment. \$125 monthly. Adults only. Available March 1st. Call 648-9878.
 ELLINGTON—3 1/2-room apartment, redecorated, new appliances, heated, air-conditioned, garage. Utilities included. \$145. Call 874-4740.
Resort Property For Rent 67
 MARTHA'S Vineyard, water-front cottage, sleeps three. Phone 742-8885.
Wanted To Rent 68
 LACK of car plus living cost creates special need for workable car. Original owner, daughter, searching for apartment (heat included) vicinity of Manchester High at downtown rental. Call 649-8583 between 8:30-7:30 p.m.
 COUPLE with 2 well behaved children and pet desires 3 bedroom, hot water, basement garage. Adults preferred. Call after 6 p.m. 645-9074.
 FAMILY of four adults desires 5 or 6 room apartment in Manchester area. Call 643-1055, Ext. 22.
Business Property For Sale 70
 MANCHESTER—20,000 square foot masonry industrial building, 1 1/2 acres, central location, all utilities. Many possibilities, including commercial use. Hayes Agency, 646-0131.
Investment Property For Sale 70-A
 PEARL St.—A 16-room duplex home. Handy to schools and Main St. Dwellings is currently occupied as rooming house showing a fine return on investment. To reconstruct property to standard 2-family dwelling would require but a minimum amount of money. For information about this well built home in an excellent neighborhood, please call Robert J. Smith, Inc., 903 Main St., Manchester.
 FIVE 1 1/2 units, good income, 649-6568. Eight units, \$70,000. Wolverton Agency, Realtors, 649-2213.
Two Ten Apartments 63-B
 LUXURIOUS walk-to-work, carpeting throughout, range, refrigerator, disposal, dishwasher, central air conditioning, tiled bath.
 Heat and hot water furnished.
 \$186 MONTHLY
 Warren C. Howard, Realtor 643-1186

Out of Town For Rent 66
 ROCKVILLE—New 3 1/2-room apartment with private terrace and pool including heat, water, gas, electric, parking. \$150. Rockland Terrace Apartments, Highland Ave., 872-4006, 872-3775.
 ROCKVILLE—four-room, fully furnished apartment. \$125 monthly. Adults only. Available March 1st. Call 648-9878.
 ELLINGTON—3 1/2-room apartment, redecorated, new appliances, heated, air-conditioned, garage. Utilities included. \$145. Call 874-4740.
Resort Property For Rent 67
 MARTHA'S Vineyard, water-front cottage, sleeps three. Phone 742-8885.
Wanted To Rent 68
 LACK of car plus living cost creates special need for workable car. Original owner, daughter, searching for apartment (heat included) vicinity of Manchester High at downtown rental. Call 649-8583 between 8:30-7:30 p.m.
 COUPLE with 2 well behaved children and pet desires 3 bedroom, hot water, basement garage. Adults preferred. Call after 6 p.m. 645-9074.
 FAMILY of four adults desires 5 or 6 room apartment in Manchester area. Call 643-1055, Ext. 22.
Business Property For Sale 70
 MANCHESTER—20,000 square foot masonry industrial building, 1 1/2 acres, central location, all utilities. Many possibilities, including commercial use. Hayes Agency, 646-0131.
Investment Property For Sale 70-A
 PEARL St.—A 16-room duplex home. Handy to schools and Main St. Dwellings is currently occupied as rooming house showing a fine return on investment. To reconstruct property to standard 2-family dwelling would require but a minimum amount of money. For information about this well built home in an excellent neighborhood, please call Robert J. Smith, Inc., 903 Main St., Manchester.
 FIVE 1 1/2 units, good income, 649-6568. Eight units, \$70,000. Wolverton Agency, Realtors, 649-2213.
Two Ten Apartments 63-B
 LUXURIOUS walk-to-work, carpeting throughout, range, refrigerator, disposal, dishwasher, central air conditioning, tiled bath.
 Heat and hot water furnished.
 \$186 MONTHLY
 Warren C. Howard, Realtor 643-1186

Out of Town For Rent 66
 ROCKVILLE—New 3 1/2-room apartment with private terrace and pool including heat, water, gas, electric, parking. \$150. Rockland Terrace Apartments, Highland Ave., 872-4006, 872-3775.
 ROCKVILLE—four-room, fully furnished apartment. \$125 monthly. Adults only. Available March 1st. Call 648-9878.
 ELLINGTON—3 1/2-room apartment, redecorated, new appliances, heated, air-conditioned, garage. Utilities included. \$145. Call 874-4740.
Resort Property For Rent 67
 MARTHA'S Vineyard, water-front cottage, sleeps three. Phone 742-8885.
Wanted To Rent 68
 LACK of car plus living cost creates special need for workable car. Original owner, daughter, searching for apartment (heat included) vicinity of Manchester High at downtown rental. Call 649-8583 between 8:30-7:30 p.m.
 COUPLE with 2 well behaved children and pet desires 3 bedroom, hot water, basement garage. Adults preferred. Call after 6 p.m. 645-9074.
 FAMILY of four adults desires 5 or 6 room apartment in Manchester area. Call 643-1055, Ext. 22.
Business Property For Sale 70
 MANCHESTER—20,000 square foot masonry industrial building, 1 1/2 acres, central location, all utilities. Many possibilities, including commercial use. Hayes Agency, 646-0131.
Investment Property For Sale 70-A
 PEARL St.—A 16-room duplex home. Handy to schools and Main St. Dwellings is currently occupied as rooming house showing a fine return on investment. To reconstruct property to standard 2-family dwelling would require but a minimum amount of money. For information about this well built home in an excellent neighborhood, please call Robert J. Smith, Inc., 903 Main St., Manchester.
 FIVE 1 1/2 units, good income, 649-6568. Eight units, \$70,000. Wolverton Agency, Realtors, 649-2213.
Two Ten Apartments 63-B
 LUXURIOUS walk-to-work, carpeting throughout, range, refrigerator, disposal, dishwasher, central air conditioning, tiled bath.
 Heat and hot water furnished.
 \$186 MONTHLY
 Warren C. Howard, Realtor 643-1186

Out of Town For Rent 66
 ROCKVILLE—New 3 1/2-room apartment with private terrace and pool including heat, water, gas, electric, parking. \$150. Rockland Terrace Apartments, Highland Ave., 872-4006, 872-3775.
 ROCKVILLE—four-room, fully furnished apartment. \$125 monthly. Adults only. Available March 1st. Call 648-9878.
 ELLINGTON—3 1/2-room apartment, redecorated, new appliances, heated, air-conditioned, garage. Utilities included. \$145. Call 874-4740.
Resort Property For Rent 67
 MARTHA'S Vineyard, water-front cottage, sleeps three. Phone 742-8885.
Wanted To Rent 68
 LACK of car plus living cost creates special need for workable car. Original owner, daughter, searching for apartment (heat included) vicinity of Manchester High at downtown rental. Call

About Town

The faculty of the Assumption High School of Religion will hold an evening of multi-media presentations and discussion for all high school students at the Holy Family Monastery in Farmington Tuesday evening. Transportation will be provided. A bus will leave from Assumption Junior High School, S. Adams St., at 6:10 p.m.

The Junior High Methodist Youth Fellowship of South United Methodist Church will meet tonight at 7:30 in the youth lounge of the church.

The education committee of Assumption Parish Council will sponsor a series of lectures on the six Sundays of Lent beginning this week at 8 p.m. in the church hall with a presentation by the Rev. Leonard J. Tartaglia, associate pastor of St. Michael Church in Hartford. Programs are being planned to reach a wide range of interests.

Manchester Chess Club will play the New London Chess Club tonight at Iona Hall, Regent St. The clubs will meet at 7 and play will begin at 7:30. Manchester will be playing its last in a series of three games in the state team tournament. Those wishing more information may contact Roger Asselin, 302 Main St. The event is open to the public.

The Couple Club of Second Congregational Church will have a square dance tomorrow at 8 p.m. in Fellowship Hall. Edwin Daly of Rocky Hill will be the caller. The committee includes Mr. and Mrs. Wayne Sechrist, Mr. and Mrs. Russell Elliott and Mr. and Mrs. Clifford Hansen.

The First Congregational District Republican Women's Association will sponsor a luncheon and fashion show Wednesday, March 4, at Wampanoag Country Club, West Hartford. The event, which is open to all interested women, will open at noon with a social hour. Tickets may be obtained before Feb. 20 by contacting Mrs. John Fletcher, 76 Irving St.

The Rev. Gary S. Cornell of South United Methodist Church will conduct a service Sunday at 8:15 a.m. on radio station WINF. The program is sponsored by the Manchester Council of Churches and the Manchester Clergy Association.

Manchester FISH is unable to provide transportation beyond the town limits starting Monday due to a severe shortage of volunteers. Transportation to Hartford and outlying areas will be resumed when more volunteers are available. Those wishing to assist may call FISH at 646-3474.

'70-71 Program and Budget On CRPA Agenda Thursday

The Capitol Region Planning Agency will hold its next meeting Thursday night at 8 in the Penney High School cafeteria on Forbes Street in East Hartford.

CRPA members will act on the proposed program and budget for the 1970-71 year and hear a transportation Committee report on the proposed 1-291 location.

Progress reports will be issued by CRPA's other committees. South Windsor Mayor Howard Flitts, chairman of the Capitol Region Council of Elected Officials - Municipal Services Committee, has been added to CRPA's Natural Resources Committee as an ex-officio member.

Flitts, along with other ex-officio CRCEO members on CRPA committees, will participate fully in the meetings and other activities of the assigned CRPA committee with the exception of formal votes. The objective of the CRCEO participation in CRPA is to provide closer coordination between the two organizations and to gain greater participation of elected officials in the regional planning process.

Town Contributions Preliminary estimates of town contributions to the Capitol Region Planning Agency and the Capitol Region Council of Elected Officials have been released by CRPA in its capacity as collection agency for the two organizations. The charges for the 1970-71 fiscal year are being supplied at this time to permit towns to include the figures in their budget preparations. They will be acted upon by the full membership of CRPA at its meeting Thursday night. The figures are computed on a formula including each town's area, net grand list and population as per cents of regional totals. The 1969 population estimates of the State Health Department are now being used by both agencies in their computations. Andover will receive a bill for \$380 from CRPA and \$300 for CRCEO or a total of \$680. Bolton will be billed for \$440 for CRPA and \$333 for CRCEO for a \$770 total. Ellington will be charged \$920 by CRPA and \$750 by CRCEO for a \$1,670 total bill. Manchester's bill will be \$2,320 for CRPA and \$1,860 for CRCEO, or a total of \$4,180.

Tax Review

The Manchester Board of Tax Review will be in session again tonight from 6 to 8 in the Municipal Building Hearing Room. It will hear grievances on tax assessments from those property owners whose last names start with the letters T through Z.

The board will conduct a special session tomorrow morning for those unable to appear on their scheduled nights. It will be from 9 to 11 also in the Hearing Room. Manchester's amended Grand List, following adjustments by the Board of Tax Review, will be released at the end of this month. It will be the basis for the 1970-71 budgets and tax rates, to be adopted by the Board of Directors in May.

Clinic Seeks To Construct Added Wing

The Community Child Guidance Clinic, a center for the treatment of emotionally disturbed children from pre-school age through adolescence, will ask the Zoning Board of Appeals for permission to build an addition to its clinic at 317 N. Main St.

The request will be aired at the ZBA public hearings Monday night. The clinic will also ask for variances to reduce side and rear yards below standards and to reduce the number of parking spaces.

The clinic now has 1,168 square feet of space and the proposed addition would add another 3,200 square feet. Several offices, plus a group therapy room and a playroom are planned.

Manchester attorney Leon Podrove has withdrawn his request for a special exception to build a gasoline station on his property on Deming St., about 200 feet west of McNall. Podrove said engineering plans for the station are not complete.

Other items to be heard include Yankee Aluminum Door Corp., 35 Oakland St. A request for a special exception allowing the sale of camp trailers.

Donald E. Torres will request a variance to build a two-family house on Woodland St., west of 90-32 Woodland. The land is in Residence A zone. The Sun Oil Co. will request a variance which would allow the installation of a lighted ground sign larger and higher than permitted at 404-414 Hartford Rd.

Manchester Hospital Notes

Intermediate Care Semi-private, noon-2 p.m., and 4 p.m. - 8 p.m.; private rooms, 10 a.m. - 2 p.m., and 4 p.m. - 8 p.m.

Medicines: Parents allowed any time except noon-3 p.m.; others, 2 p.m. - 8 p.m.

Self Service: 10 a.m. - 2 p.m., 4 p.m. - 8 p.m.

Intensive Care and Coronary Care: Immediate family only, anytime, limited to five minutes.

Maternity: Fathers, 11 a.m. - 12:45 p.m. and 6:30 p.m. - 8 p.m.; others, 3 p.m. - 4 p.m., and 6:30 p.m. - 8 p.m.

Age Limits: 16 in maternity, 12 in other areas, no limit in self-service.

The administration reminds visitors that with construction under way, parking space is limited. Visitors are asked to bear with the hospital while the parking problem exists.

Permit Issued For Single Home

The first building permit since Dec. 9 for a single-family dwelling in Manchester was issued today by the Town Building Department. It went to the Sibb Construction Co., for a dwelling on Wynding Hill Rd. The one-story house will be built by the Albrook Construction Co., for a dwelling on Vernon St.

The 66-day famine for that type of building permit is the longest in the time the department has been keeping records. Last month was the first January in the memories of building department staff members when no permits for a single-family dwelling were issued.

Rossi Observes 90th Birthday

John Rossi of 189 Oak St., who was 90 years old Feb. 3, was guest of honor at a birthday party last Saturday at the home of his granddaughter, Mrs. Henry Heine, 42 Concord Rd. About 50 guests attended. Mr. Rossi is well enough to walk around his yard, watch television, read and play with his four great-grandchildren, who come and visit him often. They are Jennifer, Jon, Mary Jo and Beth Ann Heine. He also has a son and a daughter, Eugene Rossi and Mrs. Inez Doherty, also of 189 Oak St.

Toastmasters Seat Officers

Eugene Mooney of East Hartford was installed as president of the Manchester Chew and Chat Club of the Toastmasters International on Monday night in ceremonies at the Gas Light Restaurant. He succeeds Michael Clementino.

John McCarthy of Wethersfield, area governor, was the installing officer.

Other officers installed are Carl Reback, administrative vice president; Kevin Curry, educational vice president; Andrew Davis, secretary; Larry Olsen, treasurer; and Donald Fleming, sergeant-at-arms. Membership in the club is open to all men over 18 years of age who wish to increase their ability to communicate in their everyday lives. Those wishing more information may contact Robert Gorman of 62 Linden St.

Sex Education Topic for PTA

"What to Tell Your Child About Sex" will be the topic at the Buckley School PTA meeting Monday at 8 p.m. A PTA film, "Parent to Child About Sex," will be shown, followed by a group discussion moderated by Mrs. Patricia Guay.

Mrs. Guay is a teacher at the Manchester Green School. She is a graduate of Our Lady of the Elms College in Chicopee, Mass., received her master's from Eastern Connecticut State College, and is presently studying at the University of Hartford.

Public Records

Warranty Deeds The U & R Housing Corp. to Harold J. and Sili R. Lehms, property at 161 Blue Ridge Dr., conveyance tax \$63.25.

Harold J. and Sili R. Lehms to Frederick G. and Dinna mus to Frederick G. and Dinna Therese Nassif, property at 61 Steep Hollow Lane and lot next to it, conveyance tax \$47.30.

Attachments James Brogan against Frank and Barbara Sanzo, property at 9-11 Lilley St., \$3,000. Manchester Memorial Hospital against Frank and Barbara Sanzo, property at 9-11 Lilley St., \$630.

Betty L. Lumbr against Lloyd A. Lumbr, property at 62 Wetherell St., \$100,000. The May Dept. Stores Inc., doing business as G. Fox & Co., against Paul R. and Maryann Robarge, property at 547 Center St., \$800.

Marriage Licenses Thomas Francis Walsh Jr., 43 Ridge St., and Lynne Jane Bergeron, 357 Oakland St., Feb. 21, Church of the Assumption.

John Fred Gipson, Pittsburgh, Pa., and Alice Markovik Marmula, McKeesport, Pa. Building Permits Sibb Construction Co., new dwelling at 46 Wynding Hill Rd., \$22,400.

Pasquale Addubba for Purnell Inc., alterations to commercial building at 39 Purnell Pl., \$500. Leon Cieszycki for Veterans of Foreign Wars, alterations to clubhouse at 608 E. Center St., \$7,000.

Harold Leggett, alterations to dwelling at 42 Alexander St., \$500.

VARIETY AT PERO'S ORCHARD FRESH: Macs, Baldwin's, Winesaps, Red and Golden Delicious, Russets. Watercress, Spinach, Green Squash, Peas, Shalots, Leeks, Belgian Endive, Asparagus, Egg Plant, Rhubarb, Chinese and Savoy Cabbage, Cherry Tomatoes, Cauliflower, Broccoli, Brussels Sprouts, Romaine and Boston Lettuce, Turnips, New Florida Potatoes. IMPORTED: Plums, Nectarines, Spanish Melons, Tangerines, Navel Oranges, Pineapples, Grapefruit, Temple Oranges, Bosc and D'Anjou Pears, Persimmons, Strawberries, Dates, Figs. Visit Our Store and Browse Around - You May Find Something Different WEEKEND SPECIALS ICEBERG LETTUCE head 25c GREEN SQUASH lb. 20c NEW FLORIDA POTATOES 2 lbs. 20c LARGE CALIF. NAVEL ORANGES 6 for 49c CELLO CARROTS 1/2 for 29c SEALTEST ICE CREAM 1/2 gal. 89c We Carry The Manchester Evening Herald COMPLETE LINE OF SUNDAY PAPERS OPEN 9 A.M. TO 9 P.M. DAILY PERO "THE KING OF PRODUCE!" 276 OAKLAND ST., MANCHESTER - 643-8384

WANTED! GIRLS! AGES 18 - 28 Last chance to enter Miss Manchester scholarship pageant, April 11, 1970, Manchester High School. Call Bill Johnson-643-0145 Rod Wright-649-8113 * Miss America Affiliate *

HOUSE AND HALE FRIDAY and SATURDAY ONLY SAVE 50%

MEN'S NATIONALLY ADVERTISED DELUXE TAILORED, 100% WOOL SPORT COATS 1/2 OFF Reg. 27.50 to 49.50 From one of the country's foremost manufacturers. All new 1970 models styled with flair tailored with care. Choice of single breasted or new solid blazers in muted plaids, herringbones and stripes. Regulars, shorts, long. Slight Charge for Alterations SELECT GROUP MEN'S SUITS Reg. \$30 69.95-79.95 Not All Sizes In This Group 945 MAIN ST. - MANCHESTER

open tonight till 9! valentines and valentine candies we have a complete assortment! You'll fall in love with our store Find it at AIRWAY the miracle of main street downtown manchester

Traditional Elegance An impressive world of comfort is yours to enjoy with this Traditional living room group. Sofa and chair are luxuriously fashioned in a graceful style of lasting beauty. Both have deep-buttoned pillowbacks. Seats cushioned in supersoft latex foam rubber on coil springs. Skirts are kick-pleated and fully lined. Soundly crafted in every detail. BY Johnson/carpenter Sofa and Chair \$299 QUALITY CONSTRUCTION FEATURES • Latex foam rubber seat cushions • Coil spring base with soft edge • Fabric-covered cushion platform • Fitted protective arm covers Peter's Furniture City "FURNITURE PEOPLE SINCE 1932!" DOWNTOWN MANCHESTER at 810 MAIN STREET STORE HOURS - Mon. - Fri. 9 a.m. - 9 p.m., Sat. 9 a.m. - 5 p.m.

1 3 FEB 1 3